



# Temperature Sensor GST 100 HX

Pt 100 temperature sensor

CE 0359 Explosion proof for explosive atmosphere  
EC-TYPE Examination certificate LCIE 03 ATEX 6088 X.

Ex II 1 D ta IIIC T100°C T85°C/T85°C Da/Da

T amb: -20° C à 60°C

TEMPERATURE PROBE

PT100 class B

CABLE PFA BLINDE 3x0.22mm<sup>2</sup> L=3m + EARTH LEAD

astgroup.ca



905-821-8860



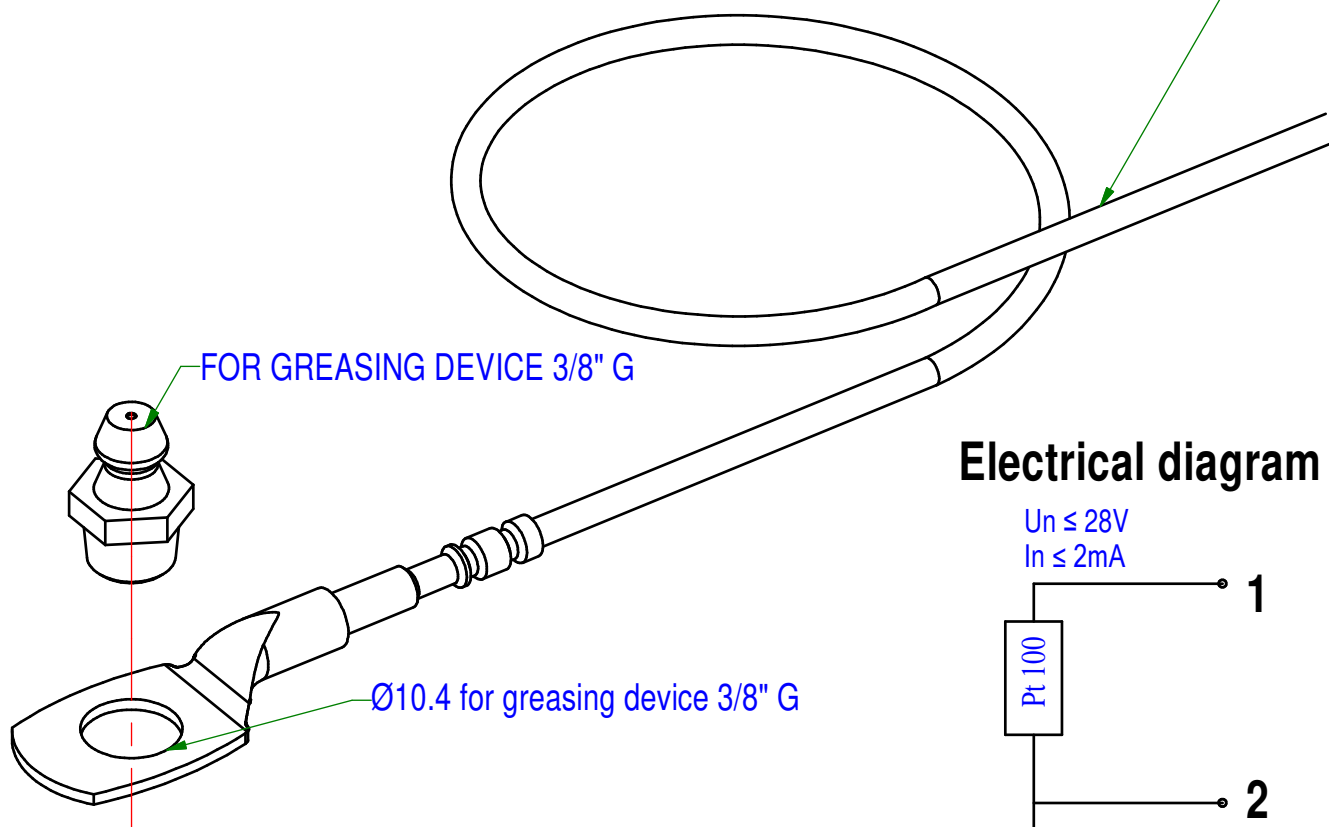
Used in ATEX zone 20.

Connection without intrinsic barrier for voltage less than or equal to 28V

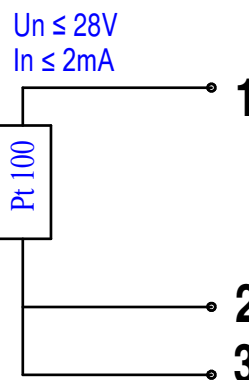
Analogical signal requiring power control interface (analogical thermostat on the PLC).

Cable lug suitable with greasing device 1/8"G

3m long cable



## Electrical diagram



Un ≤ 28V  
In ≤ 2mA

<b>B</b>	Modif. description				19/07/18	TT	MJ
Ind.	Objet de la modification				Date	Nom	Vérif.
Plan n°: 55GST7100J	Ind. Matière: <b>B</b>	Protection:	Tolérances générales: ± mm ± °		Ech.: -		
Désignation: <b>Pt100 Temperature sensor GST 100 HX</b>			<b>A4</b>				

SOCIETE DE TOLERIE INDUSTRIELLE FRANCAISE  
RCS ANGERS B 328 876 503 / 84 B 12 / APE 283 C / Télécopie 33 2 41 39 32 12  
ZA de la Lande / 49170 ST GEORGES SUR LOIRE / Téléphone 33 2 41 72 16 82 / sales@stifnet.com

Suivi ATEX: RC	Dessiné BATARD j	Vérifié: BACLE d
Date: 16/04/2008	Date: 16/04/2008	Date: 16/04/2008