

HTS SERIES

Ideal for dust collectors, cyclones, silos, hoppers, and specialized process applications

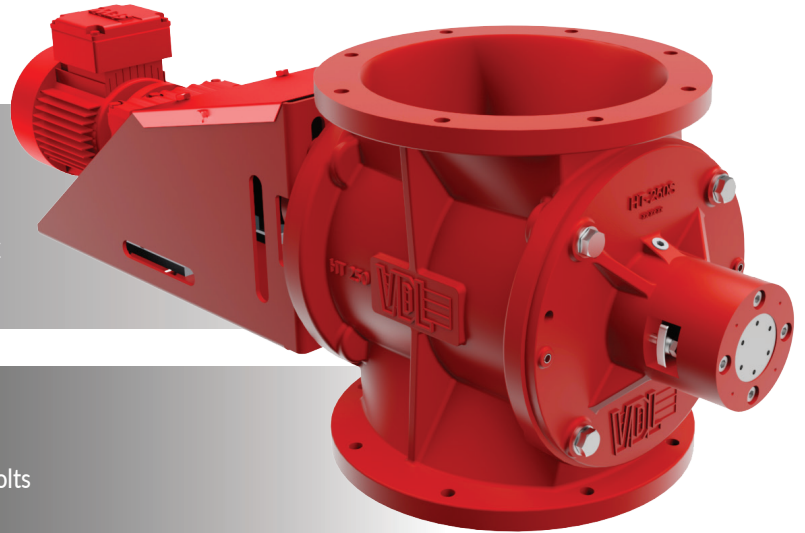
Sizes: 10" & 14"

STANDARD FEATURES

- Cast iron housing with safety red finish EX version
- Explosion and Flame Proof design rated up to 25 PSI / 670" WC
- Airlock in high vacuum installations - applications up to 160" WC
- Direct drive gearmotor with flex coupling

OPTIONAL FEATURES

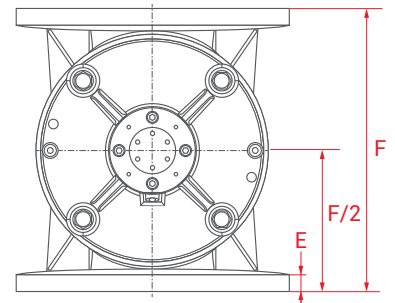
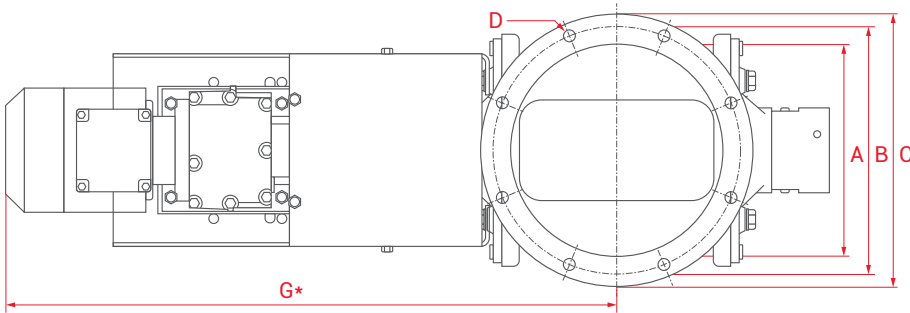
- Variable speed drive control option
- Square to round flange adapter including gasket and mounting bolts
- Quick-clean valve housing design option



CERTIFICATIONS & STANDARDS

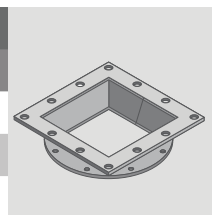


- NFPA 69 Compliant - ATEX Certified EN 15089
- OSHA Compliant drive guard for the Explosion Isolation Model
- External bearing design, 8-vane rotary blade for the Explosion Isolation
- Flex tip design certified to prevent flame passage for Passive Explosion Isolation



DIMENSIONS*										
MODEL	15 RPM HP	30 RPM HP	CAPACITY FT ³ (LTR)	Ø A	Ø B	Ø C	D	E	F*	G
HTS250	0.33	0.75	0.24 (7)/rev	10" (250 mm)	12" (290 mm)	13" (320 mm)	8xØ12 mm	0.79" (20 mm)	13" (330 mm)	28" (710 mm)
HTS350	0.50	1.00	0.70 (20)/rev	14" (340 mm)	15" (390 mm)	17" (420 mm)	8xØ12 mm	0.79" (20 mm)	16" (400 mm)	33" (830 mm)

SQUARE TO ROUND TRANSITIONS					
SQUARE TRANSITION (Nominal Size Inches)	6X6	8X8	10X10	12X12	14X14
SRT	HTS250	HTS250	HTS250	HTS350	HTS350
Transition Height	2.84" (72 mm)	2.80" (71 mm)	2.80" (71 mm)	2.80" (71 mm)	2.80" (71 mm)
Overall Height (Dim F + Transition Height)	16" (402 mm)	16" (401 mm)	16" (401 mm)	19" (471 mm)	19" (471 mm)



* Length varies dependent on motor selection – Units in inches rounded to the closest whole number