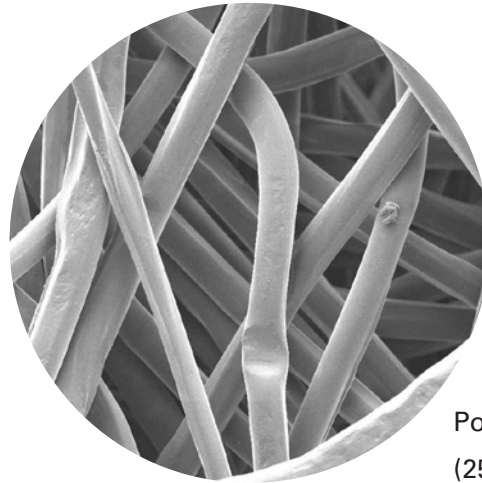




# POLYPROPYLENE BAG FILTERS

BAG FILTER MEDIA FOR BAGHOUSE DUST COLLECTORS



Polypropylene (250x)

Needled 16 oz. polypropylene felt is a chemical resistant filtration media used in pulse jet baghouse dust collectors. This material exhibits excellent chemical resistivity and holds up in applications with acids, alkalis and/or hydrolysis. It is resistant to bacteria and mildew and is good for applications up to 200° F.

## PREMIUM CONSTRUCTION

- Heat-seam construction results in a seam with increased dependability and efficiency
- Available in a wide variety of top and bottom configurations, diameters and lengths
- Options include ground wires, abrasion cuffs and expansion rings

## APPLICATIONS

- Used in food, oil, galvanizing, chemical and detergent industries

Available in configurations for many popular brands of baghouse collectors.

## MEDIA SPECIFICATIONS

|                  |   |
|------------------|---|
| Bag Technology   | Untreated   |
| Substrate        | Needled Polypropylene Felt                                      |
| Fabric Weight    | 16.0 oz./yd <sup>2</sup> (540 g/m <sup>2</sup> )                |
| Thickness        | 0.085-0.100 inches (2.2-2.5 mm)                                 |
| Air Permeability | 25-35 (cfm @ 0.5 "wg)<br>42-60 (m <sup>3</sup> /hr @ 1.25 mbar) |

## MEDIA COMPATIBILITY DATA

|                               |             |
|-------------------------------|-------------|
| Maximum Operating Temperature | 200°F, 93°C |
| Maximum Surge Temperature     | 200°F, 93°C |
| Abrasion Resistance           | Good        |
| Alkali Resistance             | Excellent   |
| Subject to Hydrolysis**       | No          |
| Chemical Resistance***        | Excellent   |

## BAG CLEANING AND DISPOSAL

For environmental compliance, it is highly recommended to consult federal, state and local environmental protection guidelines to determine the impact of washing or disposing of dirty bags. Many industry dusts are hazardous to our environment and are regulated by air quality standards and by national and local water standards during disposal.

# CONFIGURATIONS

| Collector Models                    | Filtration Area |                | Outer Diameter |               | Length* |        | Flat Width |       |
|-------------------------------------|-----------------|----------------|----------------|---------------|---------|--------|------------|-------|
|                                     | ft <sup>2</sup> | m <sup>2</sup> | in             | mm            | in      | mm     | in         | mm    |
| Dalomatic Cased - x/x/10            | 10.8            | 1              |                |               | 40      | 1016   | 19.5       | 495.3 |
| Dalomatic Cased - x/x/15            | 16.1            | 1.5            |                |               | 59      | 1499   | 19.5       | 495.3 |
| Dalomatic Insertable - 4/7 - 21/7   | 7.5             | 0.7            |                |               | 28      | 711    | 19.5       | 495.3 |
| Dalomatic Insertable - 5/12 - 50/12 | 13.5            | 1.25           |                |               | 49      | 1245   | 19.5       | 495.3 |
| Dalomatic Insertable - 6/10 - 30/10 | 10.8            | 1              |                |               | 40      | 1016   | 19.5       | 495.3 |
| Dalomatic Insertable - 9/15 - 60/15 | 16.1            | 1.5            |                |               | 59      | 1499   | 19.5       | 495.3 |
| Dalomatic Unit - DU 7, 14           | 7.5             | 0.7            |                |               | 28      | 711    | 19.5       | 495.3 |
| Dalomatic Unit - DU 10, 20          | 10.8            | 1              |                |               | 40      | 1016   | 19.5       | 495.3 |
| Dalomatic Unit - DU 30 - D225       | 16.1            | 1.5            |                |               | 59      | 1499   | 19.5       | 495.3 |
| FS/RSD Baghouse                     | 6.7             | 0.6            | 5.875          | 149.23        | 52      | 1320.8 | 9.23       | 234.4 |
|                                     | 9.7             | 0.9            | 5.875          | 149.23        | 76      | 1930.4 | 9.23       | 234.4 |
|                                     | 12.8            | 1.2            | 5.875          | 149.23        | 100     | 2540   | 9.23       | 234.4 |
|                                     | 15.9            | 1.5            | 5.875          | 149.23        | 124     | 3149.6 | 9.23       | 234.4 |
|                                     | 19.0            | 1.8            | 5.875          | 149.23        | 148     | 3759.2 | 9.23       | 234.4 |
| FT/LP Baghouse                      | 6.2             | 6.0            | 5.875          | 149.23        | 48.5    | 1231.9 | 9.23       | 234.4 |
|                                     | 9.3             | 0.9            | 5.875          | 149.23        | 72.5    | 1841.5 | 9.23       | 234.4 |
|                                     | 12.4            | 1.2            | 5.875          | 149.23        | 96.5    | 2451.1 | 9.23       | 234.4 |
|                                     | 15.4            | 1.4            | 5.875          | 149.23        | 120.5   | 3060.7 | 9.23       | 234.4 |
|                                     | 18.5            | 1.7            | 5.875          | 149.23        | 144.5   | 3670.3 | 9.23       | 234.4 |
| HP Baghouse - HPH, HPT, HPW         | 10.2            | 1.0            | 3 x 6.6        | 76.2 x 167.64 | 99      | 2515   | 7.26       | 184.4 |
| HPB Baghouse                        | 7.1             | 0.7            | 4.5            | 114.3         | 73      | 1854   | 7.07       | 179.6 |
|                                     | 9.4             | 0.9            | 4.5            | 114.3         | 97      | 2464   | 7.07       | 179.6 |
|                                     | 11.8            | 1.1            | 4.5            | 114.3         | 121     | 3073   | 7.07       | 179.6 |
| MB Baghouse - MBT, MBW              | 8.0             | 0.7            | 6.14           | 155.96        | 60      | 1524   | 9.64       | 244.9 |
|                                     | 9.6             | 0.9            | 6.14           | 155.96        | 72      | 1829   | 9.64       | 244.9 |
|                                     | 12.8            | 1.2            | 6.14           | 155.96        | 96      | 2348   | 9.64       | 244.9 |
|                                     | 16.0            | 1.5            | 6.14           | 155.96        | 120     | 3048   | 9.64       | 244.9 |
|                                     | 19.2            | 1.8            | 6.14           | 155.96        | 144     | 3658   | 9.64       | 244.9 |
| PJ & PJD Baghouse - PJ, PJD         | 7.6             | 0.7            | 4.85           | 123.19        | 77      | 1956   | 7.62       | 193.6 |
|                                     | 10.1            | 1.0            | 4.85           | 123.19        | 101     | 2565   | 7.62       | 193.6 |
|                                     | 12.7            | 1.2            | 4.85           | 123.19        | 125     | 3175   | 7.62       | 193.6 |
|                                     | 15.2            | 1.4            | 4.85           | 123.19        | 149     | 3785   | 7.62       | 193.6 |
| RF Baghouse                         | 7.6             | 0.7            | 3 x 6.6        | 76.2 x 167.64 | 75      | 1905   | 7.26       | 184.4 |
|                                     | 10.1            | 1.0            | 3 x 6.6        | 76.2 x 167.64 | 99      | 2615   | 7.26       | 184.4 |
|                                     | 12.7            | 1.2            | 3 x 6.6        | 76.2 x 167.64 | 123     | 3124   | 7.26       | 184.4 |
|                                     | 15.2            | 1.4            | 3 x 6.6        | 76.2 x 167.64 | 147     | 3734   | 7.26       | 184.4 |
| RJ Baghouse                         | 7.2             | 0.7            | 14.8 x 3.4     | 375.9 x 86.4  | 30      | 762    | 16.87      | 428.5 |
|                                     | 10.3            | 1.0            | 14.8 x 3.4     | 375.9 x 86.4  | 43      | 1092   | 16.87      | 428.5 |
|                                     | 12.9            | 1.2            | 14.8 x 3.4     | 375.9 x 86.4  | 54      | 1372   | 16.87      | 428.5 |
|                                     | 15.8            | 1.5            | 14.8 x 3.4     | 375.9 x 86.4  | 66      | 1676   | 16.87      | 428.5 |
|                                     | 18.7            | 1.7            | 14.8 x 3.4     | 375.9 x 86.4  | 78      | 1981   | 16.87      | 428.5 |
|                                     | 21.6            | 2.0            | 14.8 x 3.4     | 375.9 x 86.4  | 90      | 2286   | 16.87      | 428.5 |
|                                     | 24.4            | 2.3            | 14.8 x 3.4     | 375.9 x 86.4  | 102     | 2591   | 16.87      | 428.5 |
|                                     | 30.2            | 2.8            | 14.8 x 3.4     | 375.9 x 86.4  | 126     | 3200   | 16.87      | 428.5 |
|                                     | 35.9            | 3.3            | 14.8 x 3.4     | 375.9 x 86.4  | 150     | 3810   | 16.87      | 428.5 |

\* Rounded to the nearest inch (mm). \*\* Environmental conditions involving combinations of high temperature, corrosive material and moisture can reduce media strength. Reduction in media strength may compromise bag integrity and performance. \*\*\* A combination of chemicals may alter fiber resistance to the specified performance level. Chemical attack may compromise bag integrity and performance.

Significantly improve the performance of your collector with genuine Donaldson Torit replacement filters and parts.

**Important Notice**

Many factors beyond the control of Donaldson can affect the use and performance of Donaldson products in a particular application, including the conditions under which the product is used. Since these factors are uniquely within the user's knowledge and control, it is essential the user evaluate the products to determine whether the product is fit for the particular purpose and suitable for the user's application. All products, product specifications, availability and data are subject to change without notice, and may vary by region or country.



astgroup.ca

AST GROUP OF COMPANIES

905-821-8860

Air Separation Technologies Inc.  
astcanada.ca

AST Engineering Inc.  
astengineering.ca

AST Mechanical Inc.  
astmechanical.ca

STEVENSON SPRINKLER & Fire Protection Ltd.  
stevensonsprinkler.ca