

Donaldson®
Torit®

**LP BAGHOUSE
DUST COLLECTORS**

DURA-LIFE™
Twice The Life Filter Bags



DEPENDABLE, REVERSE AIR ROUND BAGHOUSE

The Donaldson® Torit® LP Baghouse dust collector provides superior bag filter cleaning performance in a reverse air design. The LP advantage is a cleaning arm with a flow-stop plate that keeps air from flowing through the bag filters before and after cleaning. Dust from cleaned bag filters cannot be re-entrained onto adjacent bags, resulting in lower pressure drop and reduced energy costs. Combine this with Dura-Life™ “Twice the Life” bag filters as standard and this LP Baghouse is better than any other reverse air collector on the market today.

The LP Features:

- **Flow-stop plate cleaning arm reduces dust re-entrainment**
- **Integrated helix in hopper reduces dust loading on bag filters**
- **Award winning Dura-Life™ “Twice the Life” bag filters**
- **Single inlet, outlet and hopper reduces ducting and hopper outlet costs**
- **LP cleaning provides a constant process airflow and fewer moving parts, which reduces maintenance and disruptions to system airflow**
- **LP cleaning system requires no compressed air**
- **Optional live bottom hopper grinds dusts to prevent bridging in hopper**



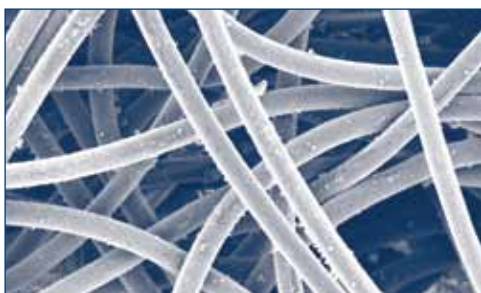
The LP cleaning arm features a flow-stop plate, which stops the airflow through recently cleaned bags to reduce dust re-entrainment

SUPERIOR PERFORMANCE

WITH DURA-LIFE™ “TWICE THE LIFE”
BAG FILTERS

DURA-LIFE™ — A TECHNOLOGY BREAKTHROUGH FOR BAG USERS**STANDARD IN ALL DONALDSON TORIT LP BAGHOUSE COLLECTORS**

Traditional 16 oz. polyester bags are produced with a needling process that creates larger pores where dust can embed into the fabric, inhibiting cleaning and reducing bag life. Dura-Life bags are engineered with a unique hydroentanglement process that uses water to blend the fibers. This process provides a more uniform material with smaller pores, better surface loading, and better cleaning. These advantages provide twice the operating life before bags need to be replaced due to pressure drop. Longer life from Dura-Life bags lowers maintenance and operating costs and raises baghouse dust collection to a whole new level.



Dura-Life Bag-Clean Air Side
(300x)



Polyester Bag-Clean Air Side
(300x)

These photos were taken with a scanning electron microscope of bag media used in a collector that was filtering fly ash. The bags were removed after 2,700 hours of use. Air-to-media ratio was 4.5 to 1. Pressure drop was 6 in. on polyester bags and 2 in. on Dura-Life.

DURA-LIFE BAGS PROVIDE BIG BENEFITS

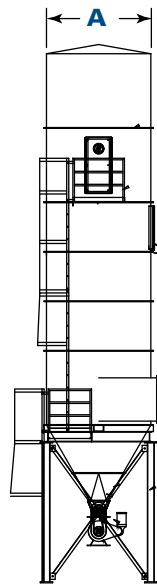
Dura-Life technology provides better surface loading and better pulse cleaning, resulting in:

- Two to three times longer bag life
- Energy savings due to lower pressure drop
- Reduced replacement bag costs due to fewer bag changeouts
- Reduced maintenance and operating costs due to fewer bag changeouts
- 30% fewer emissions based on EPA tests

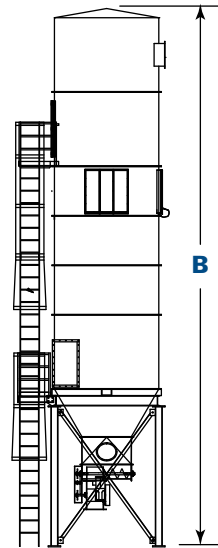


DIMENSIONS & SPECIFICATIONS

MODEL LP-108* SHOWN

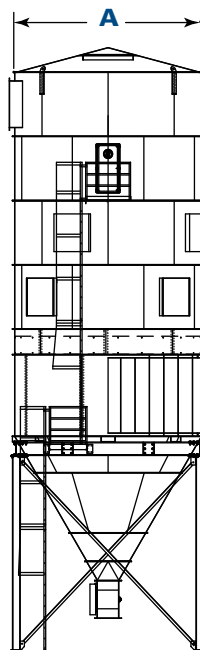


Front View LP

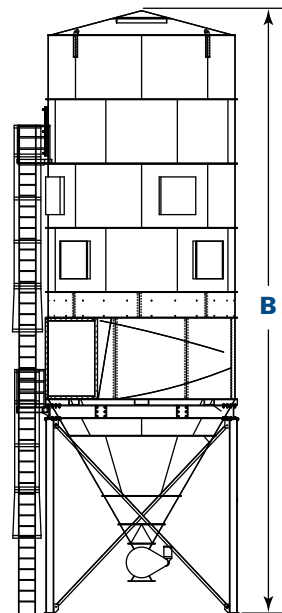


Side View LP

MODEL LP-528** SHOWN



Front View LP



Side View LP

* Model 108 LP shown with optional live bottom hopper and rotary valve.

** Model 528 shown with optional rotary valve.

DIMENSIONS & SPECIFICATIONS

Model	Nominal Airflow [†] (cfm)	Cloth Area (ft ²)	Length of Bag Filters (ft ²)	Cleaning Fan (hp)	Shipping Weight* (lbs)	Dimensions (inches)	
						A**	B**
72LP10	9,600	1,200	10	7.5	8,500	85.9	437.6
72LP12	11,520	1,440	12	7.5	9,000	85.9	485.6
108LP10	14,400	1,800	10	10	11,000	101.3	478.3
108LP12	17,280	2,160	12	10	14,000	101.3	526.8
150LP10	20,000	2,500	10	10	13,500	116.5	485.6
150LP12	24,000	3,000	12	10	14,500	116.5	534.1
198LP10	26,400	3,300	10	15	16,000	131.8	512.2
198LP12	31,680	3,960	12	15	17,000	131.8	560.7
252LP10	33,600	4,200	10	15	19,500	147.1	517.8
252LP12	40,320	5,040	12	15	21,000	147.1	566.3
312LP10	41,600	5,200	10	20	22,500	162.4	553.1
312LP12	49,920	6,240	12	20	24,000	162.4	601.6
378LP10	50,400	6,300	10	25	28,500	177.7	537.1
378LP12	60,480	7,560	12	25	30,000	177.7	585.6
450LP10	60,000	7,500	10	25	33,500	192.9	612.2
450LP12	72,000	9,000	12	25	35,500	192.9	660.7
528LP10	70,400	8,800	10	25	38,500	208.3	603.8
528LP12	84,480	10,560	12	25	41,000	208.3	675.8
594LP10	79,200	9,900	10	30	45,000	223.6	669.0
594LP12	95,040	11,880	12	30	48,000	223.6	741.0
684LP10	91,200	11,400	10	40	51,000	238.8	696.4
684LP12	109,440	13,680	12	40	53,500	238.8	768.4
780LP10	104,000	13,000	10	40	63,500	254.1	733.6
780LP12	124,800	15,600	12	40	67,000	254.1	805.6
882LP10	117,600	14,700	10	50	77,500	269.3	748.8
882LP12	141,120	17,640	12	50	82,500	269.3	820.8

† Based on clean filters.

* Legs included in weight.

** Dimensions should be used as general estimates. Height is based on unit with 36" clearance under hopper outlet pack and explosion vents. Be sure to look at dimensions after options are selected.



LP baghouse dust collectors can be equipped with bin houses to shelter 40 yard dumpsters and dust from adverse weather conditions. The bin houses come with ceiling-mounted leveling screws, which evenly distribute dust throughout the entire dumpster.

PROVEN PERFORMANCE ON HUNDREDS OF APPLICATIONS



DUAL 594LP12

at door plant (180,000+ cfm/combined)



882LP12

at almond plant (140,000 cfm/each)



THREE 684LP12

at almond shelling plant (100,000 cfm/each)



528LP12

at cabinet factory (70,000 cfm)



Two 594LP12

at a cabinet plant (80,000 cfm/each)



780LP12

at coal classifying plant (75,000 cfm)

STANDARD FEATURES & AVAILABLE OPTIONS

Collector Design	Std	Opt	Hopper Design	Std	Opt
Clean-Side Bag Removal	X		60° Hoppers	X	
Walk-In Clean Air Plenum	X		Flanged Hopper Discharge (per specification)	X	
10-Gauge Carbon Steel Construction	X		Hopper Access Panel	X	
Heavy-Duty 7 Gauge Plate Tubesheet	X		Coupling for High Level Indicator	X	
Rated 17-inches Water Gauge	X		Lexan View Port	X	
Internal Sweep Arm Cleaning Mechanism	X		High Level Indicator		X
Explosion-Proof Reverse Air Fan & Motor*	X		Support Structure		
Aluminum Fan Wheel	X		36" Clearance Leg Pack	X	
Flanged Inlet, Outlet & Body	X		Custom Clearance Leg Packs		X
Easy-Lift Lifting Ears	X		Electrical Controls, Gauges and Enclosures		
Tangential Inlet	X		Magnehelic*** Gauge	X	
Service Platform & Ladder & Ladder Cages		X	Photohelic*** Gauge		X
Stainless Steel Construction		X	Photohelic® Gauge (Weatherproof)		X
Bags & Cages			Safety Features		
Dura-Life Twice the Life Felt Snap-In Bag Filters	X		Sprinkler Kit Assembly		X
Galvanized Snap-In Bag Cage	X		Explosion Vents		X
Variety of Filter Bag Media Options		X	Interior Light for Walk-In Plenum		X
Paint System			Warranty		
Prime Coated Interior	X		10-Year Warranty	X	
Liquid Alkyd Finish Exterior	X				
Standard Colors: Torit Blue or Storm White	X				
Custom Colors		X			

* All 60 Hz motors 1 HP and above are compliant with EISA.

** Magnehelic and Photohelic are registered trademarks of Dwyer Instruments, Inc.



GLOBAL SUPPORT



- Facilities in 37 countries
- 40 manufacturing plants and 14 distribution centers
- Sales offices worldwide

LEADING TECHNOLOGY



- Over 1,000 engineers and scientists worldwide
- Broad range of innovative collectors and filters
- 100s of filter media formulations

EXPERIENCE & SERVICE



- Technical expertise and support
- Ready-to-ship filters and parts within 24 hours
- 1,000,000+ dust, fume, and mist collectors installed



**Call Donaldson Torit
to get Cleaner Air today**

astgroup.ca



905-821-8860