

Donaldson.
Torit®

**DOWNFLO® WORKSTATION
DUST COLLECTORS**

ULTRA-WEB®
High Efficiency Fine Fiber Filters Built to Last



**Smart
Collector**
Powered by iCue® Technology

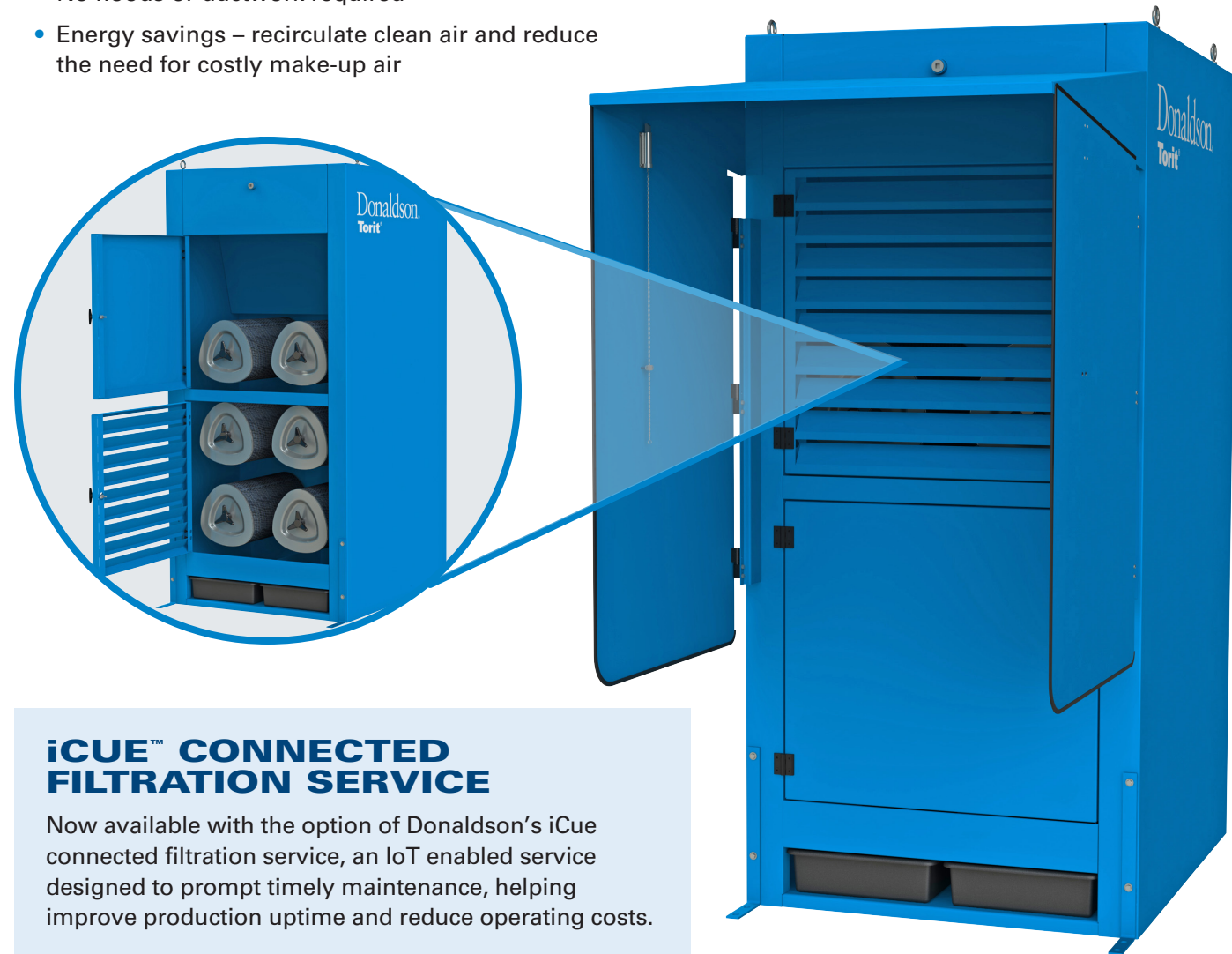
FLEXIBLE, MODULAR DUST COLLECTION

Downflo® WorkStations (DWST) fit anywhere on the plant floor and apply NO restrictions to worker movements or visibility. The full line of WorkStations is designed specifically for those in-plant areas where dirty and/or noisy operations are out in the open—grinding, sanding, chipping, batch mixing or welding.

The Downflo WorkStation’s advantages are found in the collector’s exclusive design and proprietary components. Featuring a ledgeless design in combination with proprietary Ultra-Web® filter media, the DWST delivers exceptional performance in metalworking, woodworking, and process applications where high filtration efficiency and ledgeless construction is often a requirement.

THE DOWNFLO WORKSTATION FEATURES

- Flexible, modular, self-contained workstations
- Proprietary Ultra-Web cartridge filters provide cleaner air longer
- Easy filter access requires no tools
- No hoods or ductwork required
- Energy savings – recirculate clean air and reduce the need for costly make-up air
- Ledgeless construction minimizes dust build up inside the collector
- Reversible louver inlets
- 10-year warranty



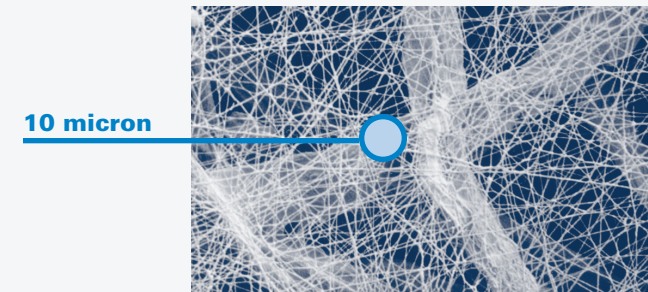
iCUE™ CONNECTED FILTRATION SERVICE

Now available with the option of Donaldson’s iCue connected filtration service, an IoT enabled service designed to prompt timely maintenance, helping improve production uptime and reduce operating costs.

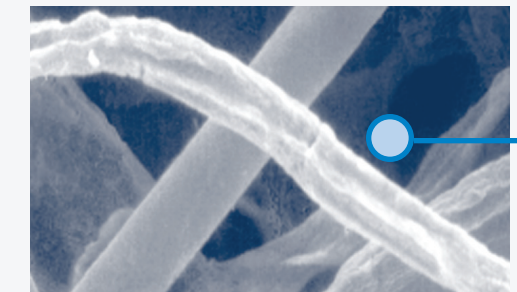
CARTRIDGE FILTER TECHNOLOGY

HIGH PERFORMANCE FILTERS

Filter design is another indication of Donaldson Torit’s commitment to technical research and development. The distinguishing factor in our filters is Ultra-Web® filtration technology. Ultra-Web fine fiber media uses a layer of fibers 0.2 to 0.3 microns in diameter to capture contaminants on the surface of the media less than one micron in size. The resulting dust cake is easily cleaned off during the automated collector cleaning cycles providing cleaner air longer.



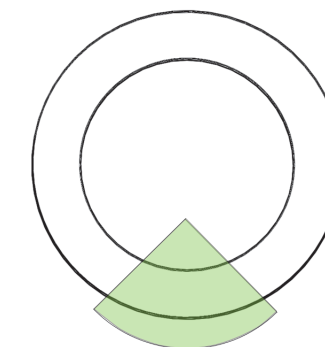
Fine Fiber Media (600x)
Fine fiber surface loading technology is available in all Ultra-Web and Fibra-Web filter cartridges.



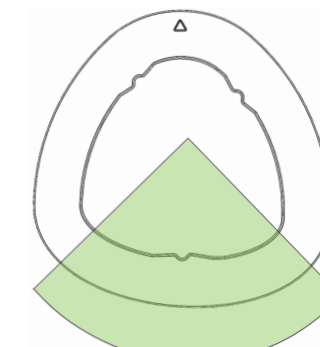
Commodity Filter Media (600x)
Conventional media has spaces of up to 60 µm between fibers, allowing dust to become deeply embedded.

TRIANGONAL FILTER SHAPE

The ultimate goal of any pulse-cleaned dust collector is to remove the contaminant from the airstream and get the contaminant into a containment vessel. The unique filter shape positions more filter media at the bottom of the cartridge element so pulse-cleaning energy directs the ejected dust toward its ultimate destination – the containment vessel!!



25% ROUND FILTER



27% TRIANGONAL FILTER

The triangular filter features more filter media at the bottom of the cartridge element than any other cartridge on the market.

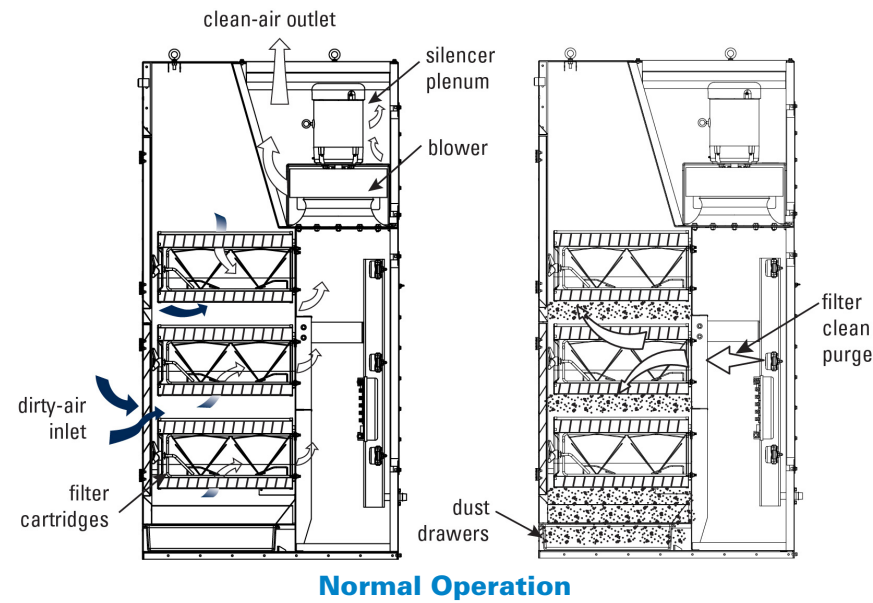
CARTRIDGE FILTERS FOR MANY APPLICATIONS

The Downflo WorkStation in conjunction with Donaldson Torit’s unique triangular-shaped filter cartridges are an unbeatable system. Choose from our superior line of filters to complete the most powerful filtration solution available for your application.

SIZES & OPERATIONS

DWST MODELS 4-1 TO 6-4

- 8 standard model sizes
- Customized sizes available
- Many options and accessories



MANY DESIGN OPTIONS

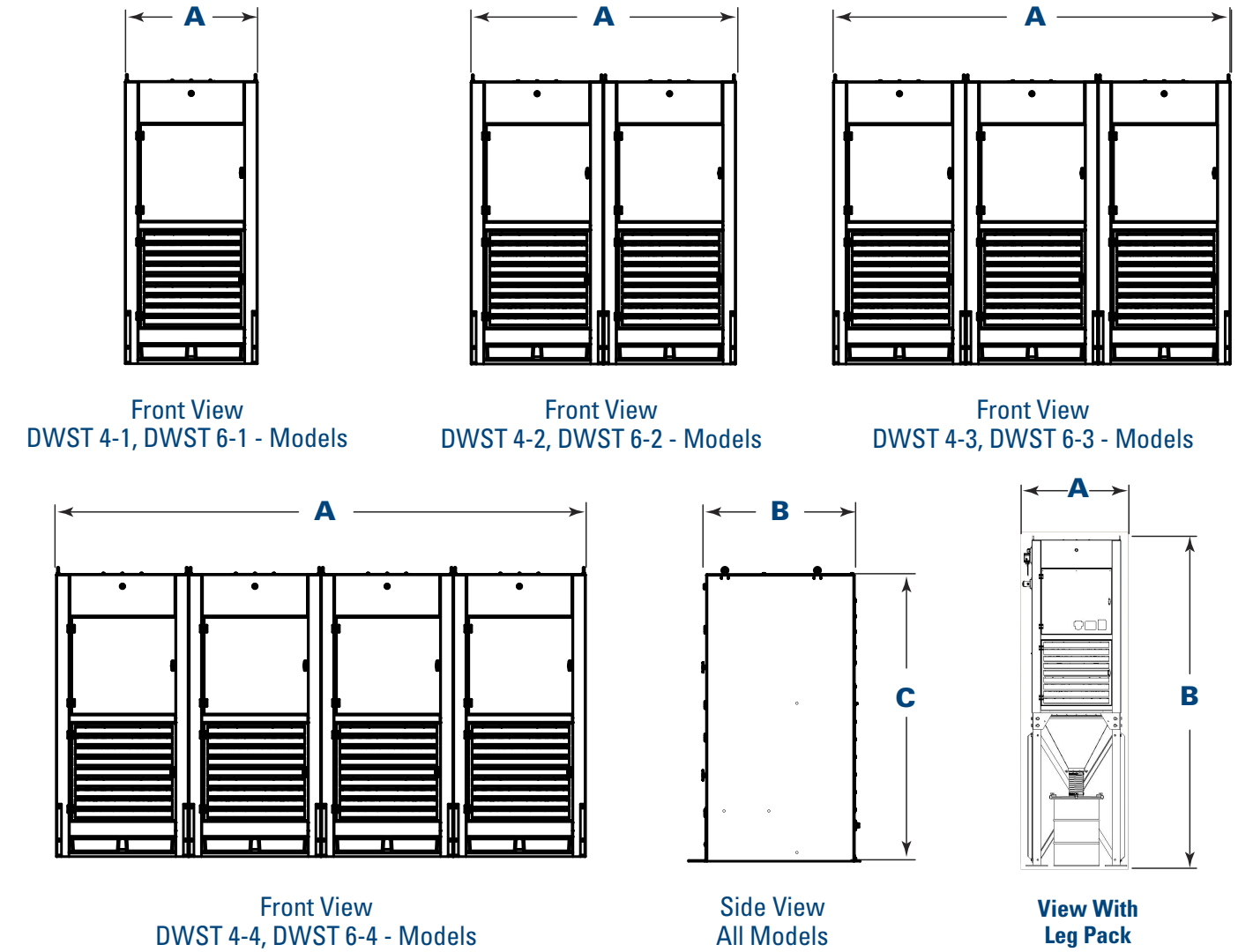
DWST booths are designed to remove fine airborne contaminants from the workers' breathing zone and provide a cleaner working environment in metalworking, woodworking, and process applications.



Models*	Canopy with Side Shields	Soft-Wall Acoustical Curtains	Hard-Wall Acoustical Panels	Ambient
Purpose	Most basic booth/hooding arrangement	Lightweight structure for moderate sound control	Heavy-duty structure for higher sound control	Heightened unit with bin arrangement for ambient air collection
DWST 4-1	45 x 36 x 90 (1143 x 914 x 2286 mm)	—	—	—
DWST 4-2	90 x 36 x 90 (2286 x 914 x 2286 mm)	90 x 90 x 90 (2286 x 2286 x 2286 mm)	90 x 90 x 90 (2286 x 2286 x 2286 mm)	—
DWST 4-3	—	135 x 90 x 90 (3429 x 2286 x 2286 mm)	135 x 90 x 90 (3429 x 2286 x 2286 mm)	—
DWST 4-4	—	180 x 90 x 90 (4572 x 2286 x 2286 mm)	180 x 90 x 90 (4572 x 2286 x 2286 mm)	—
DWST 4-5+	—	Custom	Custom	—
DWST 6-1	45 x 36 x 90 (1143 x 914 x 2286 mm)	67.5 x 90 x 90 (1715 x 2286 x 2286 mm)	—	51 x 56 x 166 (1295.4 x 1422.4 x 4216.4 mm)
DWST 6-2	90 x 36 x 90 (2286 x 914 x 2286 mm)	135 x 90 x 90 (3429 x 2286 x 2286 mm)	90 x 90 x 90 (2286 x 2286 x 2286 mm)	—
DWST 6-3	—	180 x 90 x 90 (4572 x 2286 x 2286 mm)	135 x 90 x 90 (3429 x 2286 x 2286 mm)	—
DWST 6-4	—	Custom	180 x 90 x 90 (4572 x 2286 x 2286 mm)	—
DWST 6-5+	—	Custom	Custom	—

*Dimensions are width x depth x height in inches (millimeters)

DIMENSIONS & SPECIFICATIONS



Base Model*	Modular Assemblies	Nominal Airflow**		No. of Filters	Ultra-Web Filter Area		No. of Modules	No. of Valves	No. of Dust Drawers	Shipping Weight		Dimensions					
		cfm	m³/h		ft²	m²				lb	kg	A		B		C	
										in	mm	in	mm	in	mm	in	mm
DWST 4-1		5,800	9,854	4	1,016	94	1	4	2	1300	589.7	45.0	1143.0	51.1	1298	96.0	2438.4
	DWST 4-2	11,600	19,709	8	2,032	189	2	8	4	2600	1179.3	90.0	2286.0	51.1	1298	96.0	2438.4
	DWST 4-3	17,400	29,563	12	3,048	283	3	12	6	3900	1769.0	135.0	3429.0	51.1	1298	96.0	2438.4
	DWST 4-4	23,200	39,417	16	4,064	378	4	16	8	5200	2358.7	180.0	4572.0	51.1	1298	96.0	2438.4
DWST 6-1		7,000	11,893	6	1,524	142	1	6	2	1350	612.3	45.0	1143.0	51.1	1298	96.0	2438.4
	DWST 6-2	14,000	23,786	12	3,048	283	2	12	4	2700	1224.7	90.0	2286.0	51.1	1298	96.0	2438.4
	DWST 6-3	21,000	35,679	18	4,572	425	3	18	6	4050	1837.0	135.0	3429.0	51.1	1298	96.0	2438.4
	DWST 6-4	28,000	47,572	24	6,092	566	4	24	8	5400	2449.4	180.0	4572.0	51.1	1298	96.0	2438.4
	Ambient	7000	11,893	6	1,524	142	1	6	N/A	1850	839.2	51	1295.4	56	1422.4	166	4216.4

* The first number indicates number of filters in the power module, and the second number indicates number of power modules.
 ** Based on clean filters.

APPLICATIONS

- Paint
- Pigment
- Limestone
- Glass
- Composites
- Ceramics
- Fiberglass
- Granite
- Wood
- Steel
- Welding
- Grinding
- Abrasive Blasting
- Sanding
- Aerospace
- Fabricated Metals
- Plastics



STANDARD FEATURES & AVAILABLE OPTIONS

Collector Design	Std	Opt
Ledgeless Construction 14 Gauge	X	
Tubesheet, Base Plate 10 Gauge	X	
High Performance Acoustical Airfoil Fans	X	
Aluminum Fan Wheels	X	
TEFC Motors – 7.5, 10 HP, 60 Hz	X	
TEFC Motors – 5.5, 7.5 kW, 50 Hz		X
Fan Compartment Fully Lined with Silencer Foam	X	
Compressed Air Required – 50 PSIG	X	
Fully Lined and Silenced Clean Air Plenum	X	
Reversible Open Louver Inlet		X
Quick and Easy Filter Access	X	
Acoustical Panel		X
Two Plastic Dust Drawers per Power Mod	X	
Galvanized Steel Dust Drawers		X
Integral Silencer	X	
Chamber Silencer		X
Caster Packs		X
Downdraft Bench Pack		X
Bag-Out Bag (Filter & Dust Drawer)		X
Sprinkler Pipe Coupling	X	
Sprinkler Pack Assembly		X
Leg Pack for Ambient Collection		X
Cartridge Filters		
Ultra-Web® (MERV 15)	X	
Ultra-Tek® (MERV 12); Thermo-Web™ (MERV 14); Fibra-Web® (MERV 14); Ultra-Web SB (MERV 15); Torit-Tex™ (MERV 16), Ultra-Web® AS (MERV 15)		X
HEPA/ASHRAE Afterfilters		X

Paint System	Std	Opt
Primed inside and out, exterior surfaces finished blue	X	
Custom Color		X
Electrical Controls, Gauges & Enclosures		
Solid State Timer in NEMA 4 Enclosure		X
Delta P or Delta P Plus Control Panels		X
Magnehelic®** Gauge		X
Photohelic®*** Gauge		X
iCue™ Connected Filtration Service		X
Booth Options		
Canopy with Side Shields - Painted steel construction side panels swing out 90°.		X
Soft-Wall Acoustical Curtains - Galvanized steel frames with clear PVC roof and gray acoustical side panels.		X
Hard-Wall Acoustical Panels		X
Sound Level™		
7.5 HP & 5.5 kW Power Packs – 65 dB(A)		
10 HP & 7.5 kW Power Packs – 70 dB(A)		
LAeq Pulse Average – 84-86 dB(A)		
Warranty		
10-Year Warranty		X

* The Minimum Efficiency Reporting Value (MERV) of this filter cartridge has been determined through independent laboratory testing using ASHRAE 52.2 (2007) test standards. The MERV rating was determined at a face velocity of 118 feet (36.0 meters) per minute and loading up to four inches (101.6 millimeters) water gauge. Actual efficiency of any filter cartridge will vary according to the specific application parameters. Dust concentration, airflow, particle characteristics, and pulse cleaning methods all affect filtration efficiency.

** Magnehelic and Photohelic are registered trademarks of Dwyer Instruments, Inc.

*** Sound measurements were taken under free-field conditions and do not reflect the influences of actual operating environments. Standard sound pressure levels were taken at an operator position of 1.5m high and 1m from each of the four sides of the cabinet.

**** Not all options are available with ambient configuration.



UNRIVALED PRODUCT SUPPORT

Our knowledgeable support staff is just a phone call away.

Need advice? Donaldson offers expert support for many filtration applications.

Need filters? We have 90,000 parts stocked and ready to ship within 24 hours.

Need support? Donaldson's comprehensive warranty and dedicated customer service staff are there when you need them.





astgroup.ca

 **AST GROUP**
OF COMPANIES

905-821-8860

 **Air Separation
Technologies Inc.**
astcanada.ca

 **AST**
Engineering Inc.
astengineering.ca

 **AST**
Mechanical Inc.
astmechanical.ca

STEVENS ON SPRINKLER¹⁺.CA
& Fire Protection Ltd.
stevensonsprinkler.ca

