

COMPACT, COMPLETE, CONVENIENT

# DOWNFLO® EVOLUTION PRE-ASSEMBLED SMALL



Donaldson®  
FILTRATION SOLUTIONS



Smart Collector  
Powered by iCue™ Technology



# PRODUCTIVITY MEETS PRACTICALITY

Today's advanced manufacturing tools operate in faster-paced environments, which is great for helping you meet your production goals, but can add a lot of dust to your work environment.

The Downflo® Evolution Pre-assembled Small (DFPRE) series of collectors was designed as a packaged system to answer customer demand for a compact, convenient, and reliable filtration system that can help maximize production uptime. The result is a pair of easy-to-install dust collectors — DFPRE 2 and 3 — engineered to provide unmatched filtration performance and operational confidence.

Help protect your people and productivity — while keeping your operation moving at top speed — with effective and reliable dust management solutions that can deliver:



**Environmental Health & Safety**



**Maximized Production Uptime**



**Economical Cost of Ownership**



**Packaged & Easy Installation**

# APPLICATIONS

Donaldson offers effective dust control solutions for your continuous manufacturing processes:

- + Metal Manufacturing
- + Chemical & Petroleum Products
- + Pharmaceutical
- + Metal Grinding
- + Plasma Cutting
- + Laser Cutting
- + Welding
- + Abrasive Blast
- + Plastic



# INNOVATIONS IN DUST CONTROL

For more than 40 years, Donaldson has been at the forefront of cartridge filter collection. The company has developed game-changing dust control solutions that improve performance, convenience, and help lower your total cost of ownership.

These advancements have resulted in next-generation dust control systems, including the DFPRE series of collectors.

## Smart Collector

Equipped with iCue™ Connected Filtration Technology, your Smart Collector monitors your equipment and provides operational insights through automated alerts and a dashboard that's accessible from your computer or smart device.

## Spark Reducing Inlet

When used as part of an overall fire mitigation strategy, it reduces the risk of a spark entering the dust collector by directing the airstream through a tortuous path.\*

## Sealed Drum Kit

Eliminates the need for a costly rotary airlock between the collector hopper and the drum for most combustible dust applications.

## Flameless Vent

Allows dust collection equipment to be installed indoors as part of an overall combustible dust management strategy.

*\* Intended for use in applications with an increased fire risk and can be used as part of an overall fire mitigation strategy. No single spark mitigation device, including the Spark Reducing Inlet, can guarantee the elimination of all sparks and ignition sources from entering the dust collector. Please contact your Donaldson sales representative to discuss additional fire mitigation strategies as necessary.*



# THE DFPRE IS PACKAGED TO PERFORM

With its small footprint, high-efficiency cartridge filters, and easy-to-connect ducting, the DFPRE 2 and 3 are effective solutions for organizations looking for maximum performance and production uptime from an industry leader.

## Easy Installation

- + Ships pre-assembled for streamlined set-up
- + Pre-wired fan and controls
- + Includes protective junction box
- + Clamp-together Easy-Duct™ connections don't require special tools



## Adaptability

Suitable for a wide range of applications with options including:

- + HEPA afterfilter to achieve higher filtration efficiency: 99.97% on 0.3-micron particles
- + Explosion protection to provide a complete and robust package for a variety of combustible dusts

## Maximized Performance

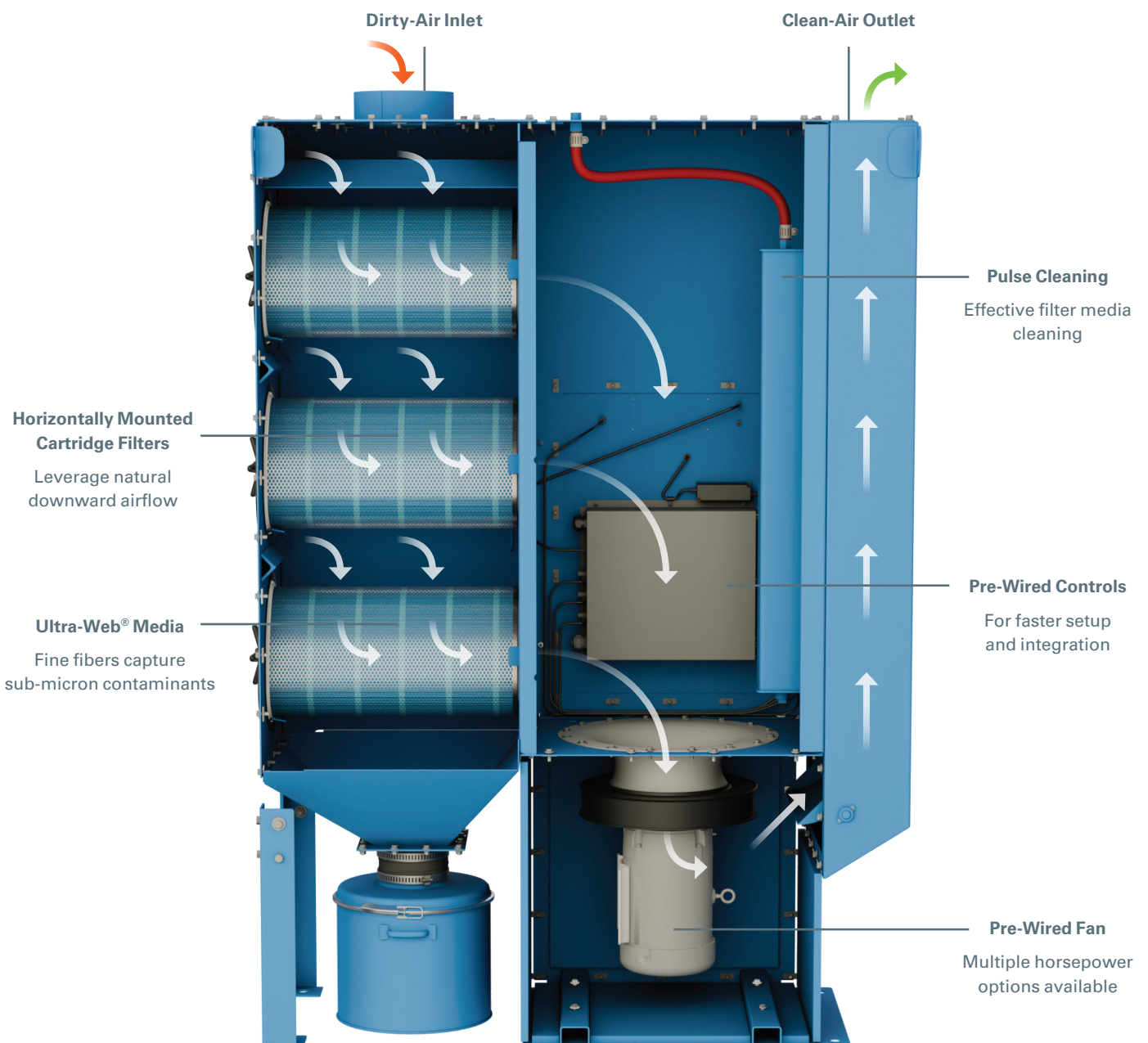
- + Advanced airflow design directs incoming air to the inlet dropout plate for reduced filter loading
- + Enhanced media surface area and pulse cleaning adds to filter life
- + Increased airflow per cartridge results in a lower cost per CFM

# ENGINEERED TO EXCEL

The DFPRE 2 and 3 utilize natural downward airflow for increased filtration performance. By ducting the dirty air into the collector from above the filters, the downward airflow forces heavy particulate from the airstream into the hopper.

The collector's horizontally mounted filters make filter changeouts easier and even help limit exposure to dust during the process. The filter orientation also contributes to reduced compressed air usage since most of the heavy particulate has already found its way to the containment vessel.

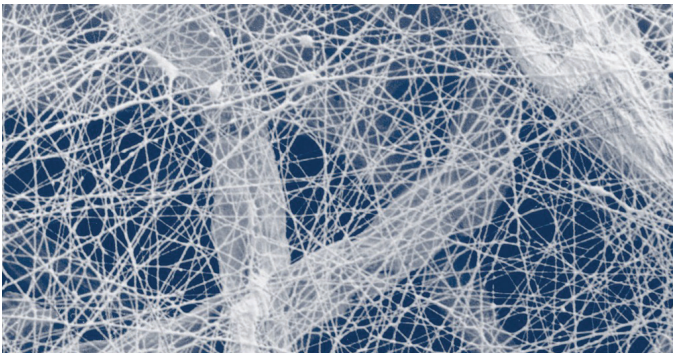
The unit's pre-wired fan and controls help take you from installation to operation faster, while the timely pulse cleaning adds to filter life and performance.



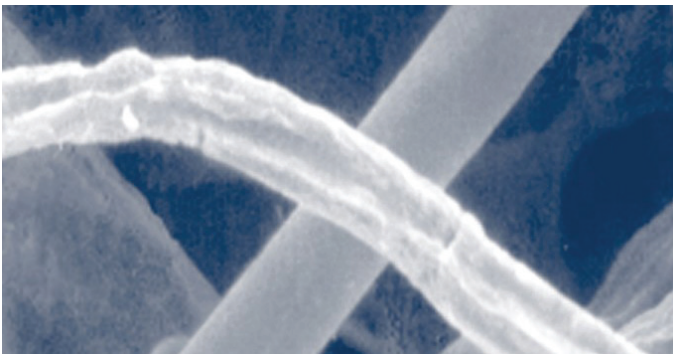
# INDUSTRY-LEADING FILTRATION DESIGN

Our horizontally mounted triangular filters — made with industry-leading Ultra-Web® fine fiber technology — have more filter media at the bottom of the cartridge so pulse-cleaning energy directs the ejected dust toward its ultimate destination — the containment vessel.

Ultra-Web filtration technology features a layer of fine fibers (0.2 – 0.3 microns in diameter) on the surface of the media to capture sub-micron contaminants. This makes the dust cake come off easily during automated cleaning cycles, ensuring cleaner air longer.



**Fine Fiber Media (600px)** — Fine fiber surface loading technology is available in all Ultra-Web and Fibra-Web® filter cartridges.



**Commodity Filter Media (600px)** — Conventional media has spaces of up to 60 µm between fibers, allowing dust to become deeply embedded.

With its more efficient cartridge filters and advanced downward airflow, the DFPRE 2 and 3 require fewer filters for the same filtration power, resulting in:

- + Reduced filter replacement costs
- + Reduced maintenance
- + Reduced floor space requirements

Triangular filters are specifically designed for improved pulse cleaning, increased airflow per cartridge, and superior performance.

## TRIANGULAR FILTER



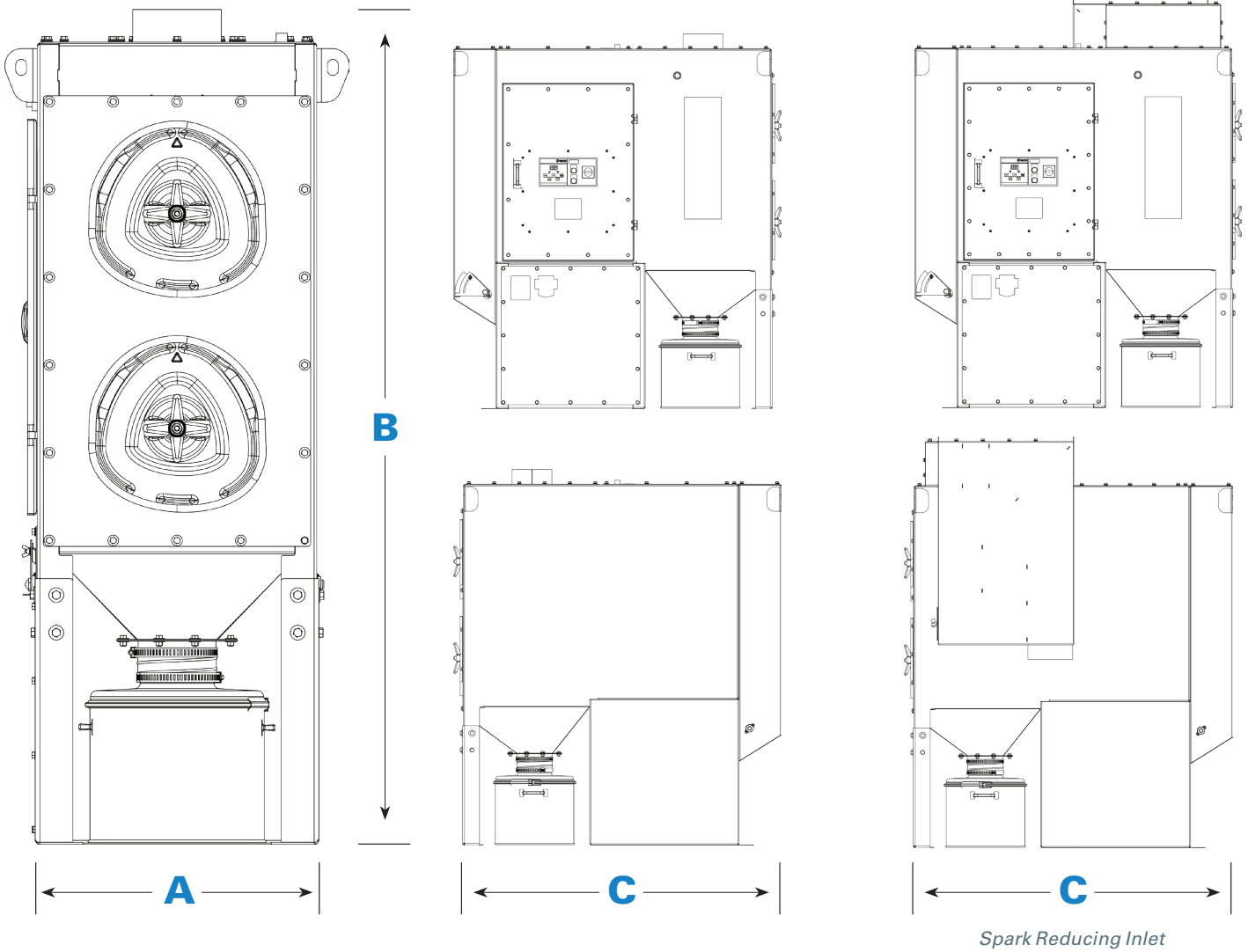
27% of Total Filter Media

## ROUND FILTER



25% of Total Filter Media

# DIMENSIONS FOR THE DFPRE 2



Model	Number of Filter Elements	Number of Valves	Dimensions (mm)*			Weight (kg)**
			Width A	Height B	Depth C	
DFPRE 2	2	2	32" (812.8)	78" (1,981.2)	68" (1,727.2)	1,009 lbs. (457.7)
DFPRE 2 with Flameless Vent	2	2	78" (1,981.2)	57" (1,447.8)	68" (1,727.2)	1,309 lbs. (593.7)
DFPRE 2 with Spark Reducing Inlet	2	2	41" (1,041.4)	85" (2,159)	68" (1,727.2)	1,180 lbs. (535.2)

\* Dimensions & Weights depend on the options chosen.

\*\* Weights include filter cartridges and are for collectors prior to first use, i.e., with no dust collected. Excludes shipped loose items.

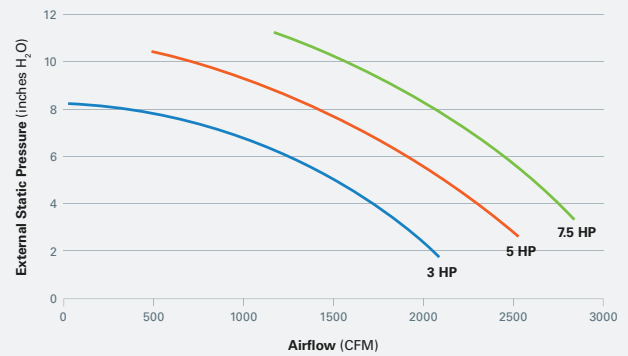


# FEATURES & OPTIONS FOR THE DFPRE 2

Collector Features	Std	Opt
Mild Steel Construction	X	
Filter Cleaning System	X	
Quick Removal Access Covers	X	
8" or 10" Straight Edge Inlet	X	
8" or 10" Easy-Duct Inlet		X
Extraction Arm		X
5 HP Fan	X	
3 or 7.5 HP Fan		X
Outlet Airflow Damper	X	
HEPA Afterfilter		X
Spark Reducing Inlet		X
Explosion Protected Models		X
Flameless Vent		X
Sprinkler Taps	X	
Sprinkler Heads		X
Bag-Out Kit (Filter)		X
10-Year Warranty	X	
<b>Hopper Discharge</b>	<b>Std</b>	<b>Opt</b>
10 gal Dust Container	X	
25 gal Dust Container		X
5 gal Sealed Drum Kit		X
<b>Paint System</b>	<b>Std</b>	<b>Opt</b>
Prime Coated Interior	X	
Textured Multi-Coat Paint Finish	X	
Custom Colors		X
Premium Duty Finish		X
Epoxy Coating		X

Electrical Controls, Gauges & Enclosures	Std	Opt
Integrated Control Box with Delta P and Motor Starter	X	
Remote Mounted Controls		X
Donaldson's iCue™ Connected Filtration Technology	X	

## Fan Options



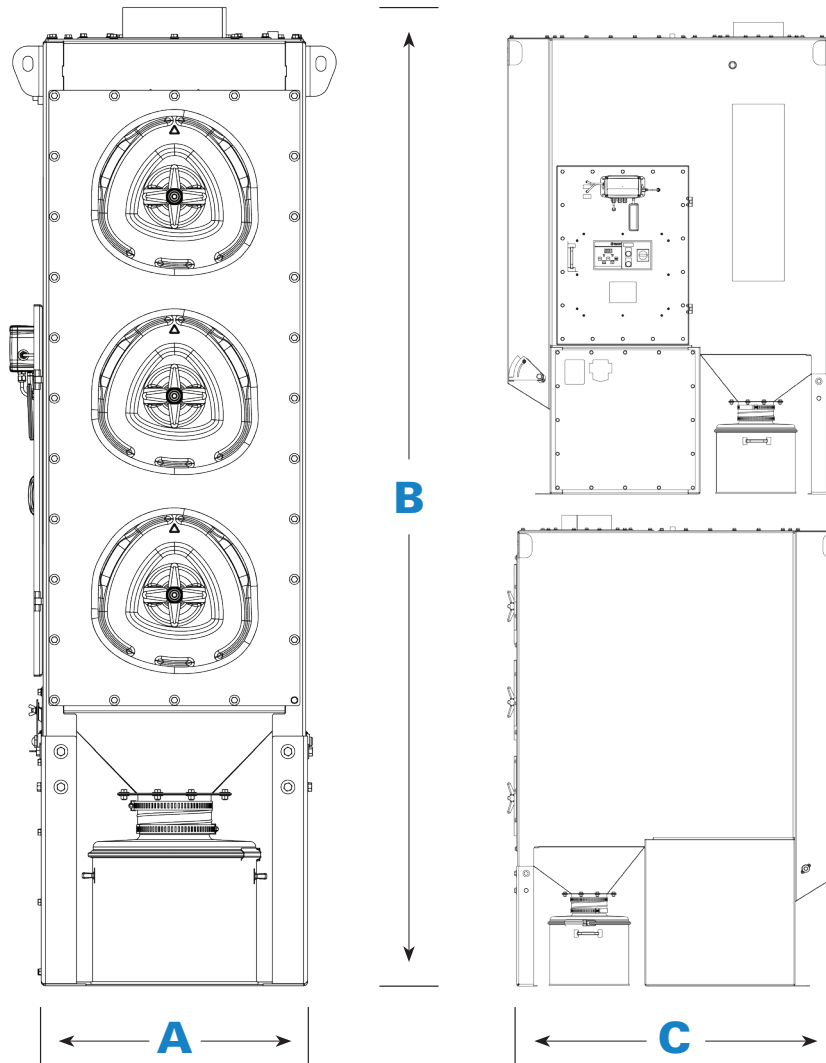
\* Fan curve is based on a standard configuration. Spark Reducing Inlet or HEPA afterfilters will impact airflow. Actual airflow values may vary.

## Noise Levels



\* Standard sound pressure levels were taken at an operator position of 1.5 m high and 1 m from the source.

# DIMENSIONS FOR THE DFPRE 3



Model	Number of Filter Elements	Dimensions (mm)*			Weight (kg)**
		Width A	Height B	Depth C	
DFPRE 3	3	32" (812.8)	96" (2,438.4)	68" (1,727.2)	1,458 lbs. (661.3)
DFPRE 3 with Flameless Vent	3	96" (2,438.4)	96" (2,438.4)	68" (1,727.2)	1,936 lbs. (878.1)
DFPRE 3 with Spark Reducing Inlet	3	44" (1,117.6)	103" (2,616.2)	68" (1,727.2)	1,700 lbs. (771.1)

\* Dimensions & Weights depend on the options chosen.

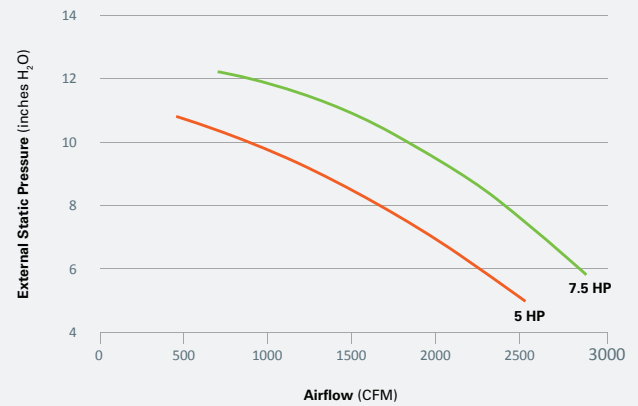
\*\* Weights include filter cartridges and are for collectors prior to first use, i.e., with no dust collected. Excludes shipped loose items.

# FEATURES & OPTIONS FOR THE DFPRE 3

Collector Features	Std	Opt
Mild Steel Construction	X	
Filter Cleaning System	X	
Integral Power Pack	X	
Quick Removal Access Covers	X	
Hinged Access Covers		X
Integral Exhaust Silencer	X	
8" or 10" Straight Edge Inlet	X	
8" or 10" Easy-Duct Inlet		X
Extraction Arm		X
5 HP Fan		X
7.5 HP Fan	X	
Outlet Airflow Damper	X	
HEPA Afterfilter		X
Spark Reducing Inlet		X
Explosion Vent	X	
Flameless Explosion Vent		X
Sprinkler Taps	X	
Sprinkler Pack		X
Ultra-Web® Fine Fiber Media	X	
Other Media Options		X
Bag-Out Kit (Filter)		X
10-Year Warranty	X	
Hopper Discharge	Std	Opt
10 gal Dust Container	X	
25 gal Dust Container		X
5 gal Sealed Drum Kit		X
8 gal Sealed Drum Kit		X
15 gal Sealed Drum Kit		X
Paint System	Std	Opt
Prime Coated Interior	X	
Textured Multi-Coat Paint Finish	X	
Custom Colors		X
Premium Duty Finish		X
Epoxy Coating		X

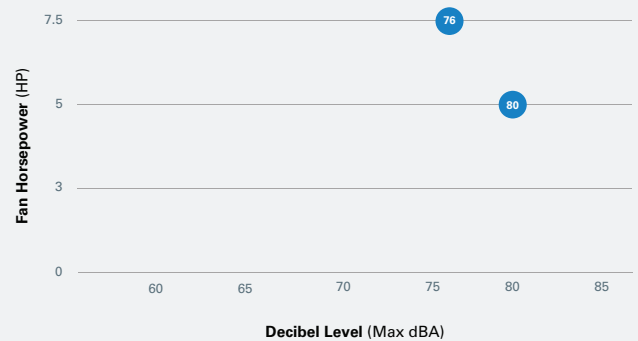
Electrical Controls, Gauges & Enclosures	Std	Opt
Integrated Control Box with Delta P and Motor Starter	X	
Remote Mounted Controls		X
Donaldson's iCue™ Connected Filtration Technology	X	

## Fan Options



\* Fan curve is based on a standard configuration. Spark Reducing Inlet or HEPA afterfilters will impact airflow. Actual airflow values may vary.

## Noise Levels

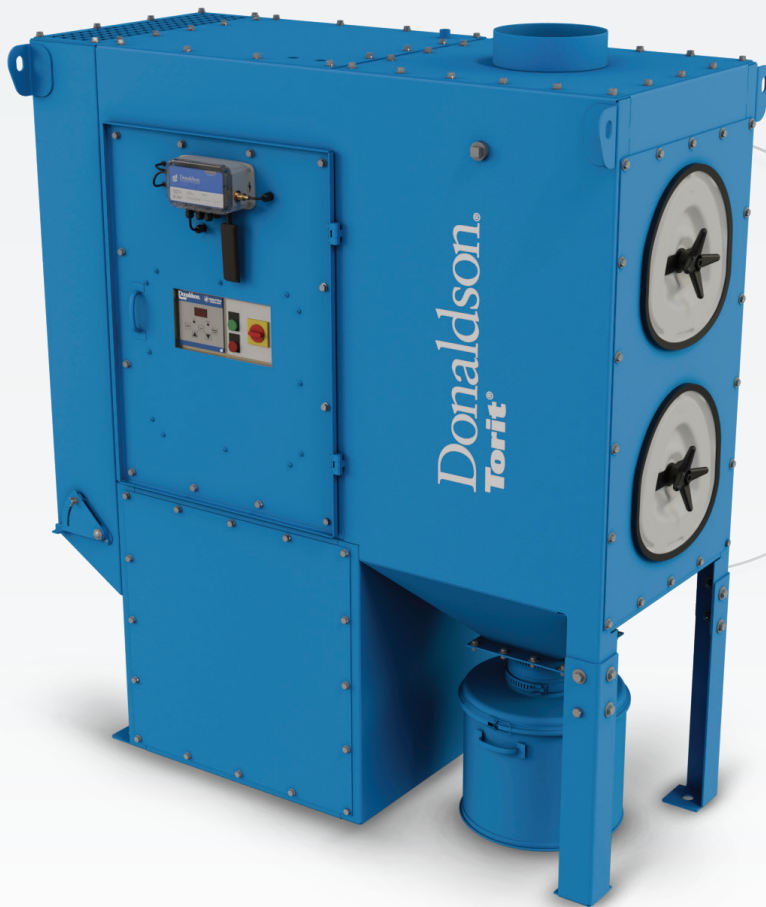
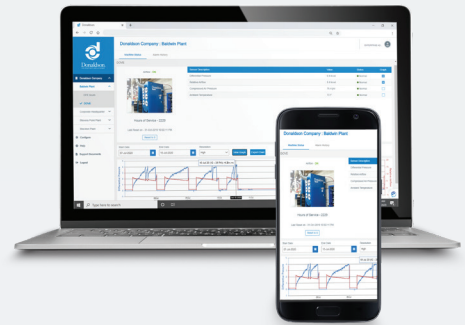


\* Standard sound pressure levels were taken at an operator position of 1.5 m high and 1 m from the source.

# SMART COLLECTOR. SMART CHOICE.

Choosing a Donaldson Smart Collector means choosing an industry-leading dust, fume, and mist collection solution for your operation and employees.

Smart Collectors come equipped with Donaldson's iCue™ Connected Filtration Technology. The system tracks your equipment, providing real-time data and analytics to help maximize uptime, increase maintenance efficiency, and manage your operation's critical compliance data. Our industry professionals, extensive product portfolio, and outstanding service and support can help ensure your Smart Collector will always be a Smart Choice.



UNPARALLELED  
**PERFORMANCE**



INNOVATIVE FILTER  
**MEDIA TECHNOLOGY**



INTELLIGENT  
**ENGINEERING**



**Smart Collector**  
Powered by iCue™ Technology



[astgroup.ca](http://astgroup.ca)



**AST GROUP**  
OF COMPANIES

905-821-8860



**Air Separation  
Technologies Inc.**  
[astcanada.ca](http://astcanada.ca)



**AST**  
Engineering Inc.  
[astengineering.ca](http://astengineering.ca)



**AST**  
Mechanical Inc.  
[astmechanical.ca](http://astmechanical.ca)

**STEVENSON SPRINKLER**.ca  
& Fire Protection Ltd.  
[stevensonssprinkler.ca](http://stevensonssprinkler.ca)



Donaldson.