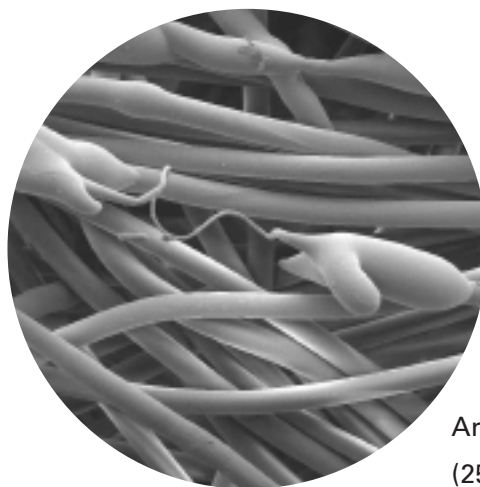




ARAMID BAG FILTERS

BAG FILTER MEDIA FOR
BAGHOUSE DUST COLLECTORS



Aramid
(250x)

Needled 14 oz. aramid felt is a high temperature filtration media used in pulse jet baghouse dust collectors. This material performs well in dry, high heat applications. It is strong, abrasion resistant and good for applications up to 400° F.

PREMIUM CONSTRUCTION

- Heat-seam construction results in a seam with increased dependability and efficiency
- Available in a wide variety of top and bottom configurations, diameters and lengths
- Options include ground wires, abrasion cuffs and expansion rings

APPLICATIONS

- Used in asphalt, quarrying, lime, foundry, cement, smelting, gypsum and chemical industries

Available in configurations for many popular brands of baghouse collectors.

MEDIA SPECIFICATIONS

Bag Technology	Singed
Substrate	Needled Aramid Felt
Fabric Weight	14.0 oz./yd ² (475 g/m ²)
Thickness	0.080-0.100 inches (2.0-2.5 mm)
Air Permeability	35-45 (cfm @ 0.5 "wg) 60-76 (m ³ /hr @ 1.25 mbar)

MEDIA COMPATIBILITY DATA

Maximum Operating Temperature	400°F, 204°C
Maximum Surge Temperature	425°F, 218°C
Abrasion Resistance	Good
Alkali Resistance	Good
Subject to Hydrolysis**	Yes
Chemical Resistance***	Fair

BAG CLEANING AND DISPOSAL

For environmental compliance, it is highly recommended to consult federal, state and local environmental protection guidelines to determine the impact of washing or disposing of dirty bags. Many industry dusts are hazardous to our environment and are regulated by air quality standards and by national and local water standards during disposal.

CONFIGURATIONS

Collector Models	Filtration Area		Outer Diameter		Length*		Flat Width	
	ft ²	m ²	in	mm	in	mm	in	mm
Dalomatic Cased - x/x/10	10.8	1			40	1016	19.5	495.3
Dalomatic Cased - x/x/15	16.1	1.5			59	1499	19.5	495.3
Dalomatic Insertable - 4/7 - 21/7	7.5	0.7			28	711	19.5	495.3
Dalomatic Insertable - 5/12 - 50/12	13.5	1.25			49	1245	19.5	495.3
Dalomatic Insertable - 6/10 - 30/10	10.8	1			40	1016	19.5	495.3
Dalomatic Insertable - 9/15 - 60/15	16.1	1.5			59	1499	19.5	495.3
Dalomatic Unit - DU 7, 14	7.5	0.7			28	711	19.5	495.3
Dalomatic Unit - DU 10, 20	10.8	1			40	1016	19.5	495.3
Dalomatic Unit - DU 30 - D225	16.1	1.5			59	1499	19.5	495.3
FS/RSD Baghouse	6.7	0.6	5.875	149.23	52	1320.8	9.23	234.4
	9.7	0.9	5.875	149.23	76	1930.4	9.23	234.4
	12.8	1.2	5.875	149.23	100	2540	9.23	234.4
	15.9	1.5	5.875	149.23	124	3149.6	9.23	234.4
	19.0	1.8	5.875	149.23	148	3759.2	9.23	234.4
FT/LP Baghouse	6.2	6.0	5.875	149.23	48.5	1231.9	9.23	234.4
	9.3	0.9	5.875	149.23	72.5	1841.5	9.23	234.4
	12.4	1.2	5.875	149.23	96.5	2451.1	9.23	234.4
	15.4	1.4	5.875	149.23	120.5	3060.7	9.23	234.4
	18.5	1.7	5.875	149.23	144.5	3670.3	9.23	234.4
HP Baghouse - HPH, HPT, HPW	10.2	1.0	3 x 6.6	76.2 x 167.64	99	2515	7.26	184.4
HPB Baghouse	7.1	0.7	4.5	114.3	73	1854	7.07	179.6
	9.4	0.9	4.5	114.3	97	2464	7.07	179.6
	11.8	1.1	4.5	114.3	121	3073	7.07	179.6
MB Baghouse - MBT, MBW	8.0	0.7	6.14	155.96	60	1524	9.64	244.9
	9.6	0.9	6.14	155.96	72	1829	9.64	244.9
	12.8	1.2	6.14	155.96	96	2348	9.64	244.9
	16.0	1.5	6.14	155.96	120	3048	9.64	244.9
	19.2	1.8	6.14	155.96	144	3658	9.64	244.9
PJ & PJD Baghouse - PJ, PJD	7.6	0.7	4.85	123.19	77	1956	7.62	193.6
	10.1	1.0	4.85	123.19	101	2565	7.62	193.6
	12.7	1.2	4.85	123.19	125	3175	7.62	193.6
	15.2	1.4	4.85	123.19	149	3785	7.62	193.6
RF Baghouse	7.6	0.7	3 x 6.6	76.2 x 167.64	75	1905	7.26	184.4
	10.1	1.0	3 x 6.6	76.2 x 167.64	99	2615	7.26	184.4
	12.7	1.2	3 x 6.6	76.2 x 167.64	123	3124	7.26	184.4
	15.2	1.4	3 x 6.6	76.2 x 167.64	147	3734	7.26	184.4
RJ Baghouse	7.2	0.7	14.8 x 3.4	375.9 x 86.4	30	762	16.87	428.5
	10.3	1.0	14.8 x 3.4	375.9 x 86.4	43	1092	16.87	428.5
	12.9	1.2	14.8 x 3.4	375.9 x 86.4	54	1372	16.87	428.5
	15.8	1.5	14.8 x 3.4	375.9 x 86.4	66	1676	16.87	428.5
	18.7	1.7	14.8 x 3.4	375.9 x 86.4	78	1981	16.87	428.5
	21.6	2.0	14.8 x 3.4	375.9 x 86.4	90	2286	16.87	428.5
	24.4	2.3	14.8 x 3.4	375.9 x 86.4	102	2591	16.87	428.5
	30.2	2.8	14.8 x 3.4	375.9 x 86.4	126	3200	16.87	428.5
	35.9	3.3	14.8 x 3.4	375.9 x 86.4	150	3810	16.87	428.5

* Rounded to the nearest inch (mm). ** Environmental conditions involving combinations of high temperature, corrosive material and moisture can reduce media strength. Reduction in media strength may compromise bag integrity and performance. *** A combination of chemicals may alter fiber resistance to the specified performance level. Chemical attack may compromise bag integrity and performance.

Significantly improve the performance of your collector with genuine Donaldson Torit replacement filters and parts.

Important Notice

Many factors beyond the control of Donaldson can affect the use and performance of Donaldson products in a particular application, including the conditions under which the product is used. Since these factors are uniquely within the user's knowledge and control, it is essential the user evaluate the products to determine whether the product is fit for the particular purpose and suitable for the user's application. All products, product specifications, availability and data are subject to change without notice, and may vary by region or country.



astgroup.ca **AST GROUP OF COMPANIES** 905-821-8860

Air Separation Technologies Inc.
astcanada.ca

AST Engineering Inc.
astengineering.ca

AST Mechanical Inc.
astmechanical.ca

STEVENSON SPRINKLER & Fire Protection Ltd.
stevensonspinkler.ca