

Rotary Valve Selector Guide

ACS VALVES

2022

The logo for ACS Valves, featuring the letters "ACS" in a large, bold, blue sans-serif font, with the word "VALVES" in a smaller, blue sans-serif font directly below it. The logo is contained within a white square.

ACS
VALVES

Table of Contents

Product	Page
AN-X Series Valve	3
CI Series	4
CI Series with Quick-Clean RotorRail™	6
Sanitary CI Series with Quick-Clean RotorRail™	8
XTR-CI Series	10
MD Series	11
MD Series with Quick-Clean RotorRail™	13
Sanitary MD Series with Quick-Clean RotorRail™	15
XTR-MD Series	17
12" Multi-Port Series	18
DR-S Series	19
Aero-Flow™ Series	21
DC Series	22
S-Pellet Series	24
S-Pellet Series with Quick-Clean RotorRail™	26
BT Series	28
BT Series with Quick-Clean RotorRail™	30

Product	Page
SD Series	32
FT Series	34
DTFV Series (Discharge Trough Feeder Valve)	36
Gravity Diverter Valve Y-style Series	38
CI-RPV Series	40
Mini 19 Series	42
Double-Flap Valve Series	43
CDC-CI Series	44
Sanitary CDC-CI Series	46
P Series Valve	48
Micro-ingredient Valve	50
Channel Changer Valve	52
Piece Breaker Flex	54
Wood Chip Feeder Valve	55
Iris Gravity Valve	58

AN-X Series Valve

Dust Collector Valve for airlock applications

The AN-X Valve is an NFPA compliant dust collector valve for any application. Complete with steel rotor tips and outboard bearings, this valve is great for easy, drop-in replacements for FT or AN dust collection valves.



**SECTOR
INDUSTRIES:**



FEATURES

- Mild Steel construction
- Rotor with steel rotor tips
- Heavy-duty construction
- Direct-drive operation
- Tight internal clearances
- ACST-4™ glandless Teflon® shaft seal

BENEFITS

- NFPA compliant
- Steel tips
- Outboard bearings
- Easy drop-in replacements

VALVE ROTARY VALVE CAPACITY (CUBIC FEET/HOUR)

8"	0.64
10"	1.34
12"	2.46

Capacities shown are based on 100% pocket-fill efficiency. Pocket-fill efficiencies vary by application. To ensure optimal efficiency, contact ACS Valves.

SPECIFICATIONS:

INLET/OUTLET FLANGE SIZES:	MATERIAL OF CONSTRUCTION:	PRESSURE DIFFERENTIAL:	HIGH TEMPERATURE RANGE:
3 sizes from 8", 10", 12"	Mild Steel, Stainless Steel	Up to 15" psi	500°F

ACS VALVES

Product Specifications

CI Series

Rotary Valve for Metering, Feeding and Airlock Applications

The CI Series rotary valves are also available in sanitary 304 or 316 cast stainless steel models. Sanitary CI Series models also offer the ACS RotorRail™ quick-clean feature.



SECTOR INDUSTRIES:



Plastics



Pet Food



Construction



Food



Pharmaceutical and Cosmetics



Chemical

FEATURES

- Available in 10 heights, from 10"H to 44"H; and 10 square-flange sizes from 6" to 26".
- Valve housing cast in North America; ensures superior strength and solidification of housing's metallurgy.
- CNC-machined components and housing provide precision tolerances; eliminates axial shaft movement, extends maintenance cycles.
- Outboard bearing design protects bearings in high-temperature and high-PSIG applications; removes bearings from direct path of damaging contaminants.

- Easily manages pressure differentials up to 15 PSIG; with super-duty series up to 22 PSIG.
- Excellent performance in high-temperature applications up to 750°F.
- 8-vane rotor with beveled tips and sides.

UNIFORM FEED OPTION

Staggered Rotor Pocket

- 16 offset pockets ensure a continuous and uniform flow rate to the conveying line
- More accurate rate of material flow

SPECIFICATIONS:

INLET/OUTLET FLANGE SIZES:

10 sizes from 6" to 26"

MATERIAL OF CONSTRUCTION:

Cast Iron, Stainless Steel

PRESSURE DIFFERENTIAL:

Up to 20 PSIG

HIGH TEMPERATURE RANGE:

750°F

astgroup.ca



905-821-8860



CI Series

Rotary Valve for Metering, Feeding and Airlock Applications



ACS VALVES

OPTIONS

- | | |
|---|--|
| <ul style="list-style-type: none"> • 304, 304L, 316, 316L, or 2205 cast stainless steel valve housing. | <ul style="list-style-type: none"> • Shaft seal types: ACST-4™ glandless Teflon® shaft seal, and packing gland. |
| <ul style="list-style-type: none"> • No. 4 finish on internal product contact surfaces of housing, and all rotor surfaces. | <ul style="list-style-type: none"> • Valve housing vent ports. |
| <ul style="list-style-type: none"> • Interior coatings: hard chrome, tungsten, nickel, and epoxy. | <ul style="list-style-type: none"> • Shaft seal and rotor pocket air purge. |
| <ul style="list-style-type: none"> • Rotor types: closed-end, metering, shallow-pocket, adjustable-tip, and Teflon®-coated. | <ul style="list-style-type: none"> • 6-vane, 10-vane, or 12-vane rotor. |
| <ul style="list-style-type: none"> • Adjustable rotor tip types: EPDM rubber, polyurethane, mild steel, hardened steel, stainless steel, and bronze. | <ul style="list-style-type: none"> • Custom drive packages. |
| | <ul style="list-style-type: none"> • Application-specific accessories: blow-through adapter, shear plate deflector, surge hopper, motion speed switch assembly. |

ROTARY VALVE CAPACITY (cubic feet/hour)

VALVE SIZE (INCHES)	6	6	30	48	60	72	84	96	108	120	132
	8	12	60	96	120	144	168	192	216	240	264
	10	24	120	192	240	288	336	384	432	480	528
	12	45	225	360	450	540	630	720	810	900	990
	14	66	330	528	660	792	924	1056	1188	1320	1452
	16	84	420	672	840	1008	1176	1344	1512	1680	1848
	18	162	810	1296	1620	1944	2268	2592	2916	3240	3564
	22	276	1380	2208	2760	3312	3864	4416	4968	5520	6072
	24	384	1920	3072	3840	4608	5376	6144	6912	7680	8448
	26	540	2700	4320	5400	6480	7560	8640	9720	10800	11880
	1	5	8	10	12	14	16	18	20	22	
ROTARY SPEED (RPM)											

Capacities shown are based on 100% pocket-fill efficiency. Pocket-fill efficiencies vary by application. To ensure optimal efficiency, contact ACS Valves.

astgroup.ca



905-821-8860



ACS VALVES

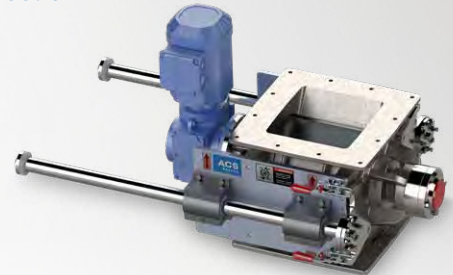
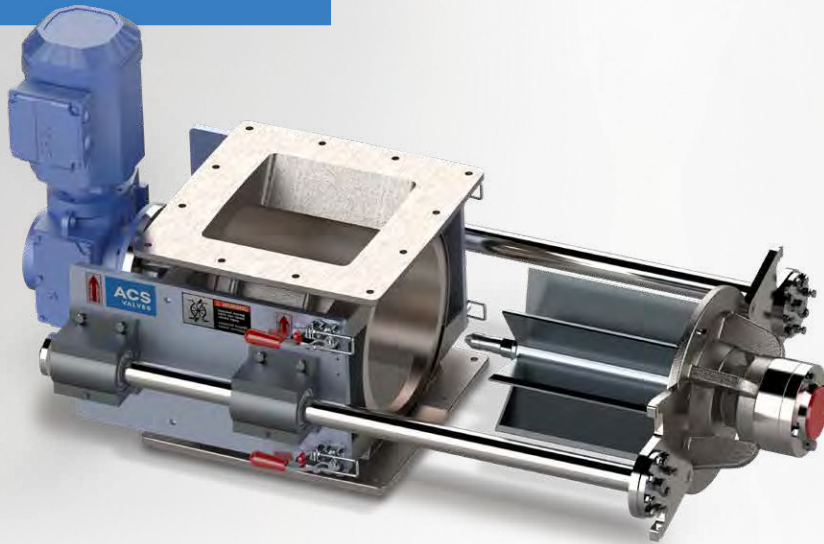
Product Specifications

CI Series

with Quick-Clean RotorRail™

Rotary Valve for Metering, Feeding and Airlock Applications

Tool-less, single-step access to rotor and internal surfaces; simplifying cleaning, validation, and inspection.



SECTOR INDUSTRIES:



Plastics



Pet Food



Construction



Food



Pharmaceutical
and Cosmetics



Chemical

FEATURES

- Tool-less, single-step access to rotor and internal surfaces; simplifying cleaning, validation, and inspection.
- RotorRail™ feature maintains rotor and endplate alignment during dis-assembly; ensures fast and accurate rotor and endplate re-alignment during re-assembly.
- Available in 8 heights, from 10"H to 30"H; and 8 flange inside diameters from 6" x 6" to 22" to 22".
- CNC-machined components and housing provide precision tolerances; eliminates axial shaft movement, extends maintenance cycles.
- Outboard bearing design protects bearings in high-temperature and high-PSIG applications; removes bearings from direct path of damaging contaminants.
- Easily manages pressure differentials up to 15 PSIG.
- Excellent performance in high-temperature applications up to 500°F.
- 8-vane rotor with beveled tips and sides.
- Direct-drive motor package.

SPECIFICATIONS:

INLET/OUTLET
FLANGE SIZES:

4 sizes from 4" to 18"

MATERIAL OF
CONSTRUCTION:

Cast Iron,
Stainless Steel

PRESSURE
DIFFERENTIAL:

Up to 15 PSIG

HIGH TEMPERATURE
RANGE:

500°F

astgroup.ca



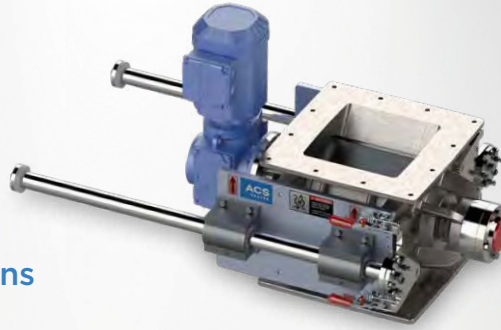
905-821-8860



CI Series

with Quick-Clean RotorRail™

Rotary Valve for Metering,
Feeding and Airlock Applications



ACS

VALVES

OPTIONS

- | | |
|--|--|
| <ul style="list-style-type: none"> • 304 or 316 cast stainless steel valve housing. | <ul style="list-style-type: none"> • Shaft seal types: ACST-4™ glandless Teflon® shaft seal, and packing gland. |
| <ul style="list-style-type: none"> • Square inlet / outlet flange. | <ul style="list-style-type: none"> • Valve housing vent ports. |
| <ul style="list-style-type: none"> • No. 4 finish on internal product contact surfaces of housing, and all rotor surfaces. | <ul style="list-style-type: none"> • Shaft seal and rotor pocket air purge. |
| <ul style="list-style-type: none"> • Interior coatings: hard chrome, tungsten, nickel, and epoxy. | <ul style="list-style-type: none"> • 6-vane, 10-vane, or 12-vane rotor. |
| <ul style="list-style-type: none"> • Rotor types: closed-end, metering, shallow-pocket, adjustable-tip, and Teflon®-coated. | <ul style="list-style-type: none"> • Custom drive packages. |
| <ul style="list-style-type: none"> • Adjustable rotor tip types: hardened steel, stainless steel, and bronze. | <ul style="list-style-type: none"> • Application-specific accessories: blow-through adapter, shear plate deflector, surge hopper, motion speed switch assembly. |

ROTARY VALVE CAPACITY (cubic feet/hour)

VALVE SIZE (INCHES)	6	6	30	48	60	72	84	96	108	120	132
	8	12	60	96	120	144	168	192	216	240	264
	10	24	120	192	240	288	336	384	432	480	528
	16	45	225	360	450	540	630	720	810	900	990
	1	5	8	10	12	14	16	18	20	22	
	ROTARY SPEED (RPM)										

Capacities shown are based on 100% pocket-fill efficiency. Pocket-fill efficiencies vary by application. To ensure optimal efficiency, contact ACS Valves.

ACS VALVES

Product Specifications

Sanitary CI Series

with Quick-Clean RotorRail™
Rotary Valve for Metering,
Feeding & Airlock Applications

The sanitary CI Series valves, with ACS RotorRail™ quick-clean design, also have multiple Run-Clean™ features that reduce material buildup inside the housing during operation.



SECTOR INDUSTRIES:



Plastics



Pet Food



Construction



Food



Pharmaceutical
and Cosmetics



Chemical

FEATURES

- | | | |
|---|---|--|
| <ul style="list-style-type: none"> • 304 or 316 stainless steel valve housing, cast in North America, ensures superior housing solidification and metallurgy; eliminates pits and dimples where contaminants could accumulate. | <ul style="list-style-type: none"> • RotorRail™ feature maintains rotor and endplate alignment during disassembly; ensures fast and accurate rotor and endplate re-alignment during re-assembly. | <ul style="list-style-type: none"> • Run-Clean™ features include: angled surfaces, rounded edges, and factory-applied internal coatings to reduce material buildup in the housing during operation. |
| <ul style="list-style-type: none"> • Product contact surfaces of the housing, and all rotor surfaces, are a No. 4 finish. | <ul style="list-style-type: none"> • CNC-machined components and housing provide precision tolerances; eliminates axial shaft movement, extends maintenance cycles. | <ul style="list-style-type: none"> • Outboard bearing design protects bearings in high-temperature and high-PSIG applications; removes bearings from direct path of damaging contaminants. |
| <ul style="list-style-type: none"> • Tool-less, single-step access to rotor and internal surfaces; simplifying cleaning, validation, and inspection. | <ul style="list-style-type: none"> • Available in 7 heights, from 10"H to 44"H; and 7 square-flange sizes from 6" to 30". | <ul style="list-style-type: none"> • Excellent performance in applications up to 500°F. |
| <ul style="list-style-type: none"> • Easily manages pressure differentials up to 20 PSIG. | <ul style="list-style-type: none"> • 8-vane rotor with beveled tips and sides. | |

SPECIFICATIONS:

INLET/OUTLET FLANGE SIZES:	MATERIAL OF CONSTRUCTION:	PRESSURE DIFFERENTIAL:	HIGH TEMPERATURE RANGE:
7 sizes from 6" to 30"	Stainless Steel	Up to 20 PSIG	500°F

astgroup.ca

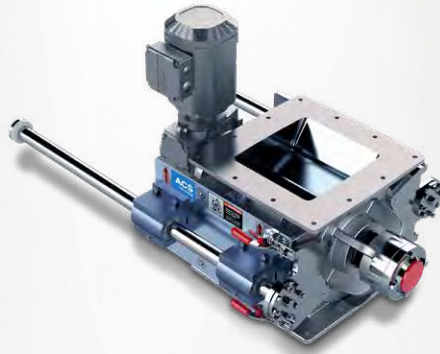


905-821-8860



Sanitary CI Series

with Quick-Clean RotorRail™



ACS VALVES

OPTIONS

- 304, 304L, 316, 316L, or 2205 cast stainless steel valve housing.
- No. 4 finish on internal product contact surfaces of housing, and all rotor surfaces.
- Interior coatings: hard chrome, tungsten, and Teflon®.
- Rotor types: closed-end, metering, shallow-pocket, adjustable-tip, and Teflon®-coated.
- Adjustable rotor tip types: hardened steel, stainless steel, and bronze.
- Shaft seal types: ACST-4™ glandless Teflon® shaft seal, and packing gland.
- Valve housing vent ports.
- Shaft seal and rotor pocket air purge.
- 6-vane or 10-vane.
- Custom drive packages.
- Application-specific accessories: blow-through adapter, shear plate deflector, surge hopper, motion speed switch assembly.

ROTARY VALVE CAPACITY (cubic feet/hour)

VALVE SIZE (INCHES)	6	6	30	48	60	72	84	96	108	120	132
	8	12	60	96	120	144	168	192	216	240	264
	10	24	120	192	240	288	336	384	432	480	528
	12	45	225	360	450	540	630	720	810	900	990
	14	66	330	528	660	792	924	1056	1188	1320	1452
	16	84	420	672	840	1008	1176	1344	1512	1680	1848
	18	162	810	1296	1620	1944	2268	2592	2916	3240	3564
	1	5	8	10	12	14	16	18	20	22	
ROTARY SPEED (RPM)											

Capacities shown are based on 100% pocket-fill efficiency. Pocket-fill efficiencies vary by application. To ensure optimal efficiency, contact ACS Valves.

astgroup.ca

AST GROUP
OF COMPANIES

905-821-8860

 Air Separation
Technologies Inc.
astcanada.ca

 AST
Engineering Inc.
astengineering.ca

 AST
Mechanical Inc.
astmechanical.ca

 STEVENSON SPRINKLER
& Fire Protection Ltd.
stevensonspinkler.ca

XTR-CI Series

Corrosion-resistant Rotary Valve for Abrasive or Acidic Materials



The XTR-CI Series valve boasts high corrosion resistance with the same efficient, high-performance design of our popular square-flange CI Series rotary valve. It is specially outfitted to excel in any pressure pneumatic conveying system that requires food-grade product contact.



**Need it in round flange?
Check out our XTR-MD.**

SECTOR INDUSTRIES:



Plastics



Pet Food



Construction



Food



Pharmaceutical
and Cosmetics



Chemical

FEATURES

- Cast iron housing and endplates coated with XTR-Coat, a chemically-resistant coating.
- Resists wear and corrosion from chemicals, acid and abrasive material.
- XTR-Coat also prevents material sticking and buildup on valve surfaces.
- USDA and FDA compliant.
- Mild steel or stainless steel rotor machined with precision for tight tolerances.
- Rated for great performance in operating temperatures up to 500°F.
- Handles pressure differentials up to 15 PSIG.

ACS now offers XTR-Coat synergistic coatings to maximize performance in a variety of applications. XTR-Coat finishes provide wear and corrosion protection, reduced friction and non-stick performance. XTR-Coat finishes are a high-performance, non-toxic and FDA-compliant alternative to industrial chrome plating.

- Available sizes: Square flange 8" through 12".
- Expedites cleaning and sanitation operations; works well in washdown duty environments.
- Non-stick, food-grade properties for sugar, flour, pet food and other food processing applications.
- Dry-lubricity.
- Non-porous, moisture-proof surfaces and mold release.

SPECIFICATIONS:

INLET/OUTLET
FLANGE SIZES:

Square flange 8" to 12"

MATERIAL OF
CONSTRUCTION:

Cast Iron, XTR-Coat

PRESSURE
DIFFERENTIAL:

Up to 15 PSIG

HIGH TEMPERATURE
RANGE:

500°F

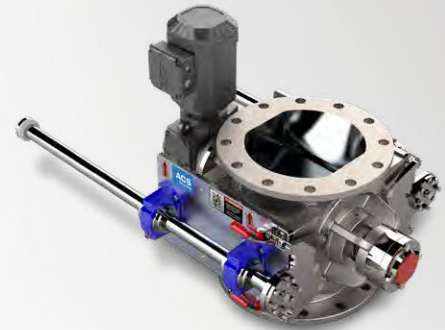
ACS VALVES

Product Specifications

MD Series

Rotary Valve for Metering, Feeding and Airlock Applications

The MD Series valves, with ACS RotorRail™ quick-clean design, provide tool-less, single-step access to rotor and internal surfaces.



SECTOR INDUSTRIES:



Plastics



Pet Food



Construction



Food



Pharmaceutical and Cosmetics



Chemical

FEATURES

- | | |
|---|--|
| <ul style="list-style-type: none"> Available in 7 heights, from 7 3/8"H to 23 1/2"H; and 7 flange diameters from 4" to 16". | <ul style="list-style-type: none"> Easily manages pressure differentials up to 15 PSIG; with super-duty series up to 22 PSIG. |
| <ul style="list-style-type: none"> Valve housing cast in North America; ensures superior strength and solidification of housing's metallurgy. | <ul style="list-style-type: none"> Excellent performance in high-temperature applications up to 750°F. |
| <ul style="list-style-type: none"> CNC-machined components and housing provide precision tolerances; eliminates axial shaft movement, extends maintenance cycles. | <ul style="list-style-type: none"> Cast iron housing. |
| <ul style="list-style-type: none"> Outboard bearing design protects bearings in high-temperature and high-PSIG applications; removes bearings from direct path of damaging contaminants. | <ul style="list-style-type: none"> 8-vane rotor with beveled tips and sides. |

SPECIFICATIONS:

INLET/OUTLET
FLANGE SIZES:

7 sizes from 4" to 16"

MATERIAL OF
CONSTRUCTION:

Cast Iron,
Stainless Steel

PRESSURE
DIFFERENTIAL:

Up to 22 PSIG

HIGH TEMPERATURE
RANGE:

750°F

astgroup.ca



905-821-8860



MD Series

Rotary Valve for Metering,
Feeding and Airlock Applications



ACS
VALVES

OPTIONS

- 304 or 316 cast stainless steel valve housing.
- RotorRail™ feature provides tool-less access to rotor and internal surfaces; speeds cleaning and inspection; ensures fast, accurate rotor and endplate re-alignment.
- No. 4 finish on internal product contact surfaces of housing, and all rotor surfaces.
- Interior coatings: hard chrome, tungsten, nickel, and epoxy.
- Rotor types: closed-end, metering, shallow-pocket, adjustable-tip, and Teflon®-coated.
- Adjustable rotor tip types: EPDM rubber, polyurethane, hardened steel, stainless steel, and bronze.
- Shaft seal types: ACST-4™ glandless Teflon® shaft seal, and packing gland.
- Valve housing vent ports.
- Shaft seal and rotor pocket air purge.
- 6-vane, 10-vane, or 12-vane rotor.
- Custom drive packages.
- Application-specific accessories: blow-through adapter, shear plate deflector, surge hopper, motion speed switch assembly.

ROTARY VALVE CAPACITY (cubic feet/hour)

VALVE SIZE (INCHES)	4	2	8	12	15	18	21	24	27	30	33
	6	6	30	48	60	72	84	96	108	120	132
	8	12	60	96	120	144	168	192	216	240	264
	10	24	120	192	240	288	336	384	432	480	528
	12	45	225	360	450	540	630	720	810	900	990
	14	66	330	528	660	792	924	1056	1188	1320	1452
	16	84	420	672	840	1008	1176	1344	1512	1680	1848
		1	5	8	10	12	14	16	18	20	22
ROTARY SPEED (RPM)											

Capacities shown are based on 100% pocket-fill efficiency. Pocket-fill efficiencies vary by application. To ensure optimal efficiency, contact ACS Valves.

astgroup.ca



905-821-8860



ACS VALVES

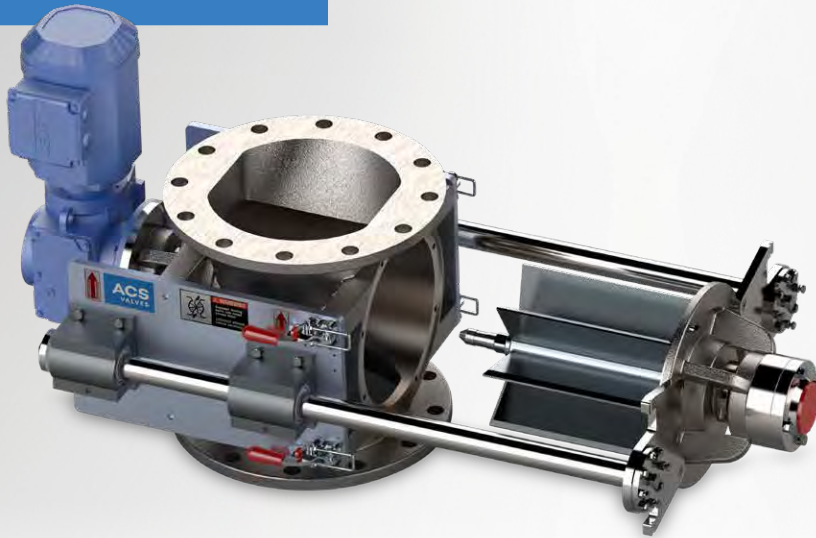
Product Specifications

MD Series

with Quick-Clean RotorRail™

Rotary Valve for Metering, Feeding and Airlock Applications

Tool-less, single-step access to rotor and internal surfaces; simplifying cleaning, validation, and inspection.



SECTOR INDUSTRIES:



Plastics



Pet Food



Construction



Food



Pharmaceutical
and Cosmetics



Chemical

FEATURES

- Tool-less, single-step access to rotor and internal surfaces; simplifying cleaning, validation, and inspection.
- RotorRail™ feature maintains rotor and endplate alignment during dis-assembly; ensures fast and accurate rotor and endplate re-alignment during re-assembly.
- Available in 7 heights, from 7 3/8"H to 23"H; and 7 flange inside diameters from 4" to 15".
- CNC-machined components and housing provide precision tolerances; eliminates axial shaft movement, extends maintenance cycles.
- Outboard bearing design protects bearings in high-temperature and high-PSIG applications; removes bearings from direct path of damaging contaminants.
- Easily manages pressure differentials up to 15 PSIG.
- Excellent performance in high-temperature applications up to 500°F.
- 8-vane rotor with beveled tips and sides.
- Direct-drive motor package.

SPECIFICATIONS:

INLET/OUTLET
FLANGE SIZES:

4 sizes from 4" to 18"

MATERIAL OF
CONSTRUCTION:

Cast Iron,
Stainless Steel

PRESSURE
DIFFERENTIAL:

Up to 15 PSIG

HIGH TEMPERATURE
RANGE:

500°F

astgroup.ca

AST GROUP
OF COMPANIES

905-821-8860

 Air Separation
Technologies Inc.
astcanada.ca

 AST
Engineering Inc.
asterengineering.ca

 AST
Mechanical Inc.
astmechanical.ca

 **STEVENSON SPRINKLER**
& Fire Protection Ltd.
stevensonspinkler.ca

MD Series

with Quick-Clean RotorRail™

Rotary Valve for Metering,
Feeding and Airlock Applications



ACS VALVES

OPTIONS

- | | |
|--|--|
| <ul style="list-style-type: none"> • 304 or 316 cast stainless steel valve housing. | <ul style="list-style-type: none"> • Shaft seal types: ACST-4™ glandless Teflon® shaft seal, and packing gland. |
| <ul style="list-style-type: none"> • Square inlet / outlet flange. | <ul style="list-style-type: none"> • Valve housing vent ports. |
| <ul style="list-style-type: none"> • No. 4 finish on internal product contact surfaces of housing, and all rotor surfaces. | <ul style="list-style-type: none"> • Shaft seal and rotor pocket air purge. |
| <ul style="list-style-type: none"> • Interior coatings: hard chrome, tungsten, nickel, and epoxy. | <ul style="list-style-type: none"> • 6-vane, 10-vane, or 12-vane rotor. |
| <ul style="list-style-type: none"> • Rotor types: closed-end, metering, shallow-pocket, adjustable-tip, and Teflon®-coated. | <ul style="list-style-type: none"> • Custom drive packages. |
| <ul style="list-style-type: none"> • Adjustable rotor tip types: hardened steel, stainless steel, and bronze. | <ul style="list-style-type: none"> • Application-specific accessories: blow-through adapter, shear plate deflector, surge hopper, motion speed switch assembly. |

ROTARY VALVE CAPACITY (cubic feet/hour)

VALVE SIZE (INCHES)	6	6	30	48	60	72	84	96	108	120	132
	8	12	60	96	120	144	168	192	216	240	264
	10	24	120	192	240	288	336	384	432	480	528
	16	45	225	360	450	540	630	720	810	900	990
	1	5	8	10	12	14	16	18	20	22	
	ROTARY SPEED (RPM)										

Capacities shown are based on 100% pocket-fill efficiency. Pocket-fill efficiencies vary by application. To ensure optimal efficiency, contact ACS Valves.

ACS VALVES

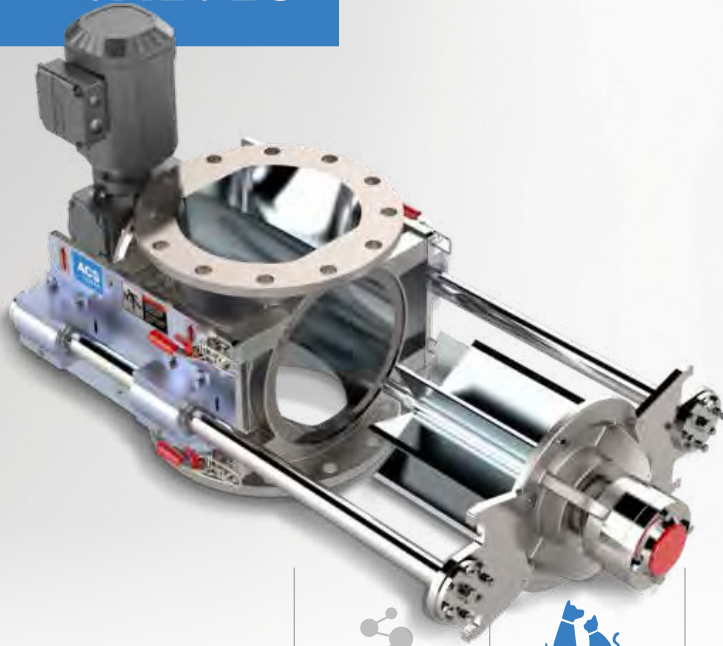
Product Specifications

Sanitary MD Series

with Quick-Clean RotorRail™

Rotary Valve for Metering, Feeding
and Airlock Applications

The MD Series valves, with ACS RotorRail™ quick-clean design, provide tool-less, single-step access to rotor and internal surfaces.



SECTOR INDUSTRIES:



Plastics



Pet Food



Construction



Food



Pharmaceutical
and Cosmetics



Chemical

FEATURES

- Stainless steel valve housing, cast in North America, ensures superior housing solidification and metallurgy; eliminates pits and dimples where contaminants could accumulate.
- Product contact surfaces of the housing, and all rotor surfaces, are a No. 4 finish.
- Tool-less, single-step access to rotor and internal surfaces; simplifying cleaning, validation, and inspection.
- RotorRail™ feature maintains rotor and endplate alignment during dis-assembly; ensures fast and accurate rotor and endplate re-alignment during re-assembly.
- Available in 7 heights, from 7 3/8"H to 23"H; and 4 flange inside diameters from 4" to 15".
- CNC-machined components and housing provide precision tolerances; eliminates axial shaft movement, extends maintenance cycles.
- Outboard bearing design protects bearings in high-temperature and high-PSIG applications; removes bearings from direct path of damaging contaminants.
- Easily manages pressure differentials up to 20 PSIG.
- Excellent performance in high-temperature applications up to 500°F.
- 8-vane rotor with beveled tips and sides.
- Direct-drive motor package.

SPECIFICATIONS:

INLET/OUTLET
FLANGE SIZES:

4 sizes from 6" to 18"

MATERIAL OF
CONSTRUCTION:

Stainless Steel

PRESSURE
DIFFERENTIAL:

Up to 20 PSIG

HIGH TEMPERATURE
RANGE:

500°F

astgroup.ca

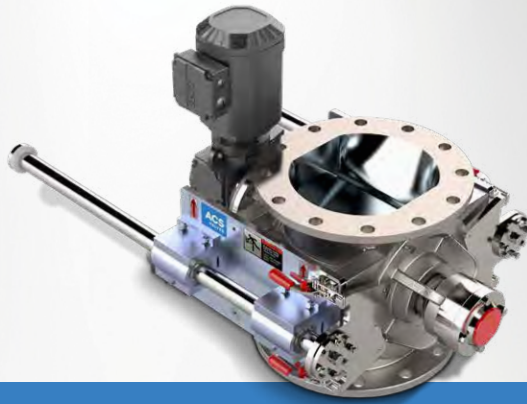


905-821-8860



Sanitary MD Series

with Quick-Clean RotorRail™



OPTIONS

- | | |
|--|--|
| <ul style="list-style-type: none"> • Square inlet / outlet flange. | <ul style="list-style-type: none"> • Shaft seal types: ACST-4™ glandless Teflon® shaft seal, and packing gland. |
| <ul style="list-style-type: none"> • No. 4 finish on internal product contact surfaces of housing, and all rotor surfaces. | <ul style="list-style-type: none"> • Valve housing vent ports. |
| <ul style="list-style-type: none"> • Interior coatings: hard chrome, tungsten, nickel, and epoxy. | <ul style="list-style-type: none"> • Shaft seal and rotor pocket air purge. |
| <ul style="list-style-type: none"> • Rotor types: closed-end, metering, shallow-pocket, adjustable-tip, and Teflon®-coated. | <ul style="list-style-type: none"> • 6-vane, 10-vane, or 12-vane rotor. |
| <ul style="list-style-type: none"> • Adjustable rotor tip types: hardened steel, stainless steel, and bronze. | <ul style="list-style-type: none"> • Custom drive packages. |
| | <ul style="list-style-type: none"> • Application-specific accessories: blow-through adapter, shear plate deflector, surge hopper, motion speed switch assembly. |

ROTARY VALVE CAPACITY (cubic feet/hour)

VALVE SIZE (INCHES)	6	6	30	48	60	72	84	96	108	120	132
	8	12	60	96	120	144	168	192	216	240	264
	10	24	120	192	240	288	336	384	432	480	528
	16	45	225	360	450	540	630	720	810	900	990
	1	5	8	10	12	14	16	18	20	22	
	ROTARY SPEED (RPM)										

Capacities shown are based on 100% pocket-fill efficiency. Pocket-fill efficiencies vary by application. To ensure optimal efficiency, contact ACS Valves.

XTR-MD Series

Corrosion-resistant Rotary Valve for Abrasive or Acidic Materials



The XTR-MD Series valve boasts high corrosion resistance with the same efficient, high-performance design of our popular round-flange MD Series rotary valve. Its unique properties are ideal for any pressure pneumatic conveying system that requires food-grade product contact.



Need it in square flange? Check out our XTR-CI.

SECTOR INDUSTRIES:



Plastics



Pet Food



Construction



Food



Pharmaceutical and Cosmetics



Chemical

FEATURES

- Cast iron housing and endplates coated with XTR-Coat, a chemically-resistant coating.
- Resists wear and corrosion from chemicals, acid and abrasive material.
- XTR-Coat also prevents material sticking and buildup on valve surfaces.
- USDA and FDA compliant.
- Mild steel or stainless steel rotor machined with precision for tight tolerances.
- Rated for great performance in operating temperatures up to 500°F.
- Handles pressure differentials up to 15 PSIG.

ACS now offers XTR-Coat synergistic coatings to maximize performance in a variety of applications. XTR-Coat finishes provide wear and corrosion protection, reduced friction and non-stick performance. XTR-Coat finishes are a high-performance, non-toxic and FDA-compliant alternative to industrial chrome plating.

- Available sizes: Round flange 8" through 12".
- Expedites cleaning and sanitation operations; works well in washdown duty environments.
- Non-stick, food-grade properties for sugar, flour, pet food and other food processing applications.
- Dry-lubricity.
- Non-porous, moisture-proof surfaces and mold release.

SPECIFICATIONS:

INLET/OUTLET FLANGE SIZES:

Round flange 8" to 12"

MATERIAL OF CONSTRUCTION:

Cast Iron, XTR-Coat

PRESSURE DIFFERENTIAL:

Up to 15 PSIG

HIGH TEMPERATURE RANGE:

500°F

ACS VALVES

Product Specifications

12" Multi-Port Series

Multi-compartment rotary valve for higher-volume applications or split-line conveying feeds

Separate airlock compartments for improved efficiency, uptime and NFPA compliance. Ideal for high volumes of free-flowing granular material or situations where multiple independent feeds are needed.



SECTOR INDUSTRIES:



Plastics



Pet Food



Construction



Food



Pharmaceutical
and Cosmetics



Chemical

FEATURES

- Trough-style openings can be designed to fit dust collectors, hoppers, bins, silos and screw conveyors.
- Higher capacity with a smaller overall height for tight space engineered solutions.
- Tighter clearances enable NFPA compliance despite larger capacity outputs (since NFPA clearances can be challenging in larger airlocks).
- With independent drives, issues or a breakdown in one compartment can be contained and allow other compartments to continue operating.
- Common parts in a unique housing mean no special maintenance requirements. Spare parts are readily available (whereas spares for larger airlocks can have a longer lead time).
- Separate airlock compartments allow for intermittent feeds — two, three or four rotors can run simultaneously or independently for multi-line feeds.
- More compact design than other valves of its kind, which reduces stack-up in silos and dust collectors.
- Direct drives in each compartment allow for independent operation.

OPTIONS

- Use to break up large pneumatic conveying systems into smaller, more manageable systems.
- Can be equipped with one elongated blow-through adapter to feed one system or multiple blow-through adapters for different line feeds.
- Equip with one large pressure blower package or several smaller ones for multiple systems.

SPECIFICATIONS:

INLET/OUTLET
3 FLANGE SIZES:

Multi-Port 12 x 24 RAL, 1.42 C.F.R.
Multi-Port 12 x 36 RAL, 2.13 C.F.R.
Multi-Port 12 x 48 RAL, 2.84 C.F.R.

MATERIAL OF
CONSTRUCTION:

Cast Iron,
Stainless Steel

PRESSURE
DIFFERENTIAL:

Up to 20 PSIG

HIGH TEMPERATURE
RANGE:

450°F Max.

astgroup.ca



AST GROUP
OF COMPANIES

905-821-8860



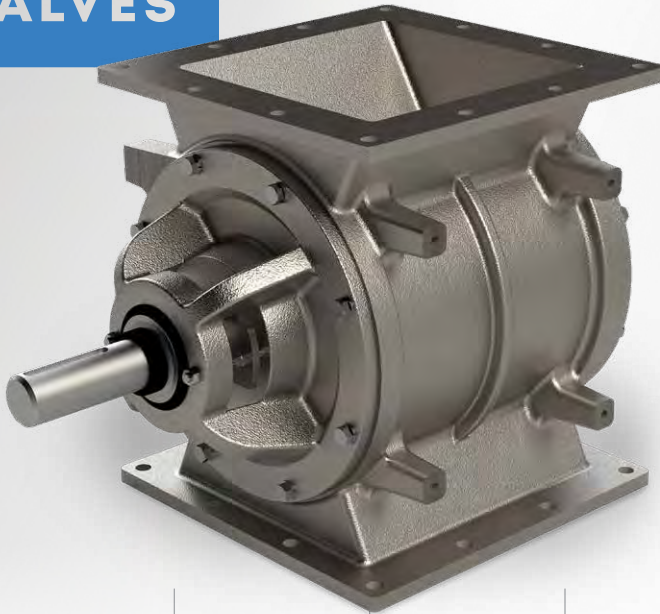
ACS VALVES

Product Specifications

DR-S Series

Rotary Valve for Metering, Feeding and Airlock Applications

The DR-S Series valves are built to application-specific requirements, including: custom rotor configurations, factory-applied internal coatings, and sanitary materials of construction.



SECTOR INDUSTRIES:



Plastics



Pet Food



Construction



Food



Pharmaceutical
and Cosmetics



Chemical

FEATURES

- Pre-fit Performance™ housings provide all of the in-use advantages built into every ACS valve, plus the assurance of precise alignment and fast installation when replacing competitive valves.
- Available in 3 heights, from 12"H to 18 1/4"H; and 3 flange sizes from 7 5/8"H to 11 1/4"H.
- Valve housing cast in North America; ensures superior strength and solidification of housing's metallurgy.
- CNC-machined components and housing provide precision tolerances; eliminates axial shaft movement, extends maintenance cycles.
- Outboard bearing design protects bearings in high-temperature and high-PSIG applications; removes bearings from direct path of damaging contaminants.
- Large shaft diameter eliminates rotor deflection; reduces rotor tip wear and bearing seal leakage.
- Easily manages pressure differentials up to 15 PSIG; super-duty series up to 22 PSIG.
- Excellent performance in high-temperature applications up to 750°F.
- Cast iron housing.
- 8-vane rotor with beveled tips and sides.

SPECIFICATIONS:

INLET/OUTLET
FLANGE SIZES:

3 sizes from 7 5/8"
to 11 1/4"

MATERIAL OF
CONSTRUCTION:

Cast Iron,
Stainless Steel

PRESSURE
DIFFERENTIAL:

Up to 22 PSIG

HIGH TEMPERATURE
RANGE:

750°F

astgroup.ca



905-821-8860



DR-S Series

Rotary Valve for Metering,
Feeding and Airlock Applications



ACS
VALVES

OPTIONS

- RotorRail™ design enables tool-less access to the rotor and all internal surfaces of the housing without time-consuming disassembly or removal from service.
- 304 or 316 cast stainless steel valve housing.
- No. 4 finish on internal product contact surfaces of housing, and all rotor surfaces.
- Interior coating: hard chrome.
- Rotor types: closed-end, shallow-pocket, and adjustable-tip.
- Adjustable rotor tip types: EPDM rubber, polyurethane, hardened steel, and stainless steel.
- Shaft seal types: ACST-4™ glandless Teflon® shaft seal, and packing gland.

ROTARY VALVE CAPACITY (cubic feet/hour)

VALVE SIZE (INCHES)	8	12	60	96	120	144	168	192	216	240	264
	10	24	120	192	240	288	336	384	432	480	528
	12	45	225	360	450	540	630	720	810	900	990
	1	5	8	10	12	14	16	18	20	22	
ROTARY SPEED (RPM)											

Capacities shown are based on 100% pocket-fill efficiency. Pocket-fill efficiencies vary by application. To ensure optimal efficiency, contact ACS Valves.

Aero-Flow™ Series



**Improve consistency.
Optimize energy consumption.**

The Aero-Flow Series valves are built to application-specific requirements, including: custom rotor configurations, factory-applied internal coatings, and sanitary materials of construction.



SECTOR INDUSTRIES:



Plastics



Pet Food



Construction



Food



Pharmaceutical
and Cosmetics



Chemical

FEATURES

- For high bulk density materials; a proprietary, dual-induction endplate design introduces pressurized air from both endplates into rotor pockets to provide highly efficient, air-assisted material introduction.
- Available in 4 heights, from 17 1/2"H to 21 1/8"H; and 4 flange sizes from 6 5/8" x 6 3/4" to 25 1/4 x 12".
- Valve housing cast in North America; ensures superior strength and solidification of housing's metallurgy.
- Cast iron housing.
- CNC-machined components and housing provide precision tolerances; eliminates axial shaft movement, extends maintenance cycles.

- Air-sealed shaft extends bearing life; reduces maintenance.
- Valve housing vent ports.
- Easily manages pressure differentials up to 20 PSIG.
- Excellent performance in high-temperature applications up to 500°F.
- 12-vane rotor with beveled tips and sides.

SPECIFICATIONS:

INLET/OUTLET
FLANGE SIZES:

4 sizes from 6 5/8" x
6 3/4" x 25 1/4" x 12"

MATERIAL OF
CONSTRUCTION:

Cast Iron,
Stainless Steel

PRESSURE
DIFFERENTIAL:

Up to 20 PSIG

HIGH TEMPERATURE
RANGE:

750°F

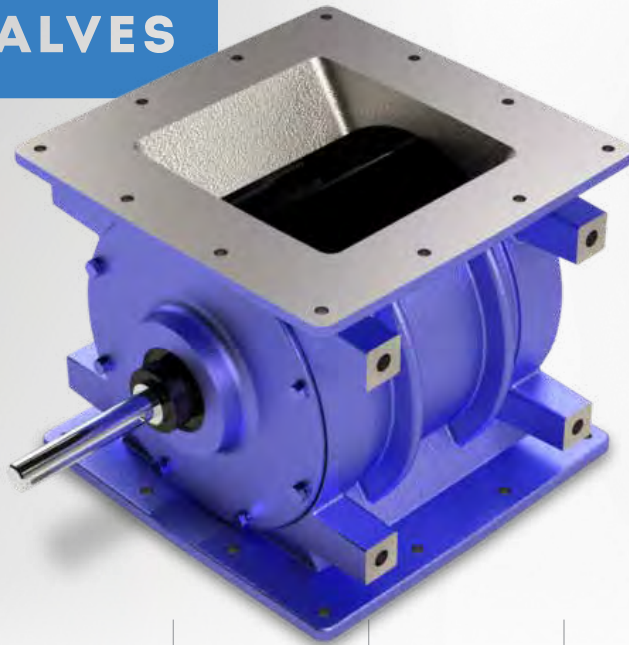
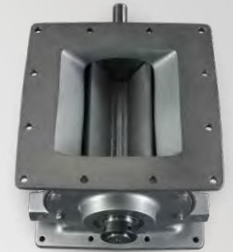
ACS VALVES

Product Specifications

DC Series

Rotary Valve for Dust Collection, Feeding, & Metering Applications

The DC Series valves are built to application-specific requirements, including: custom rotor configurations, factory-applied internal coatings, and sanitary materials of construction.



SECTOR INDUSTRIES:



Plastics



Pet Food



Construction



Food



Pharmaceutical
and Cosmetics



Chemical

FEATURES

- Available in 3 heights, from 10 1/2"H to 15 1/2"H; and 3 square-flange sizes from 8" to 12".
- Valve housing cast in North America; ensures superior strength and solidification of housing's metallurgy.
- CNC-machined components and housing provide precision tolerances; eliminates axial shaft movement, extends maintenance cycles.
- Excellent performance in high-temperature applications up to 250°F.
- Cast iron housing.
- 6-vane rotor with beveled tips and sides.
- Compact, direct-drive motor package.

SPECIFICATIONS:

INLET/OUTLET
FLANGE SIZES:

3 sizes from 8" to 12"

MATERIAL OF
CONSTRUCTION:

Cast Iron,
Stainless Steel

PRESSURE
DIFFERENTIAL:

-

HIGH TEMPERATURE
RANGE:

250°F

astgroup.ca

AST GROUP
OF COMPANIES

905-821-8860

 Air Separation
Technologies Inc.
astcanada.ca

 AST
Engineering Inc.
asterengineering.ca

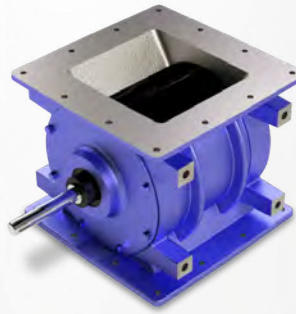
 AST
Mechanical Inc.
astmechanical.ca

 **STEVENSON SPRINKLER**
& Fire Protection Ltd.
stevensonspinkler.ca

Product Specifications

DC Series

Rotary Valve for Dust Collection, Feeding, & Metering Applications



ACS VALVES

ROTARY VALVE CAPACITY (cubic feet/hour)

VALVE SIZE (INCHES)	8	12	60	96	120	144	168	192	216	240	264
	10	24	120	192	240	288	336	384	432	480	528
	12	45	225	360	450	540	630	720	810	900	990
	1	5	8	10	12	14	16	18	20	22	
	ROTARY SPEED (RPM)										

Capacities shown are based on 100% pocket-fill efficiency. Pocket-fill efficiencies vary by application. To ensure optimal efficiency, contact ACS Valves.

astgroup.ca



905-821-8860



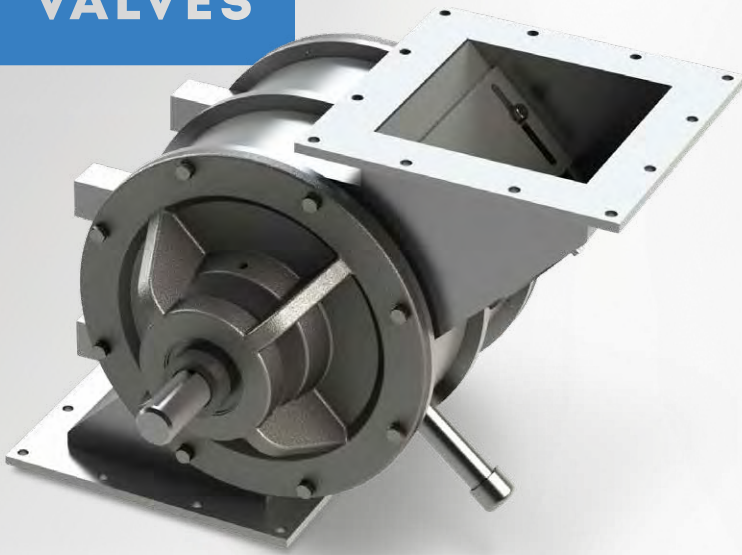
ACS VALVES

Product Specifications

S-Pellet Series

Rotary Valve for Metering, Feeding, and Airlock Applications

For handling of material such as pellets, beads, and granules that require protection from shearing; side inlet with adjustable material flow control ensures accurate rotor pocket filling without material shearing.



SECTOR INDUSTRIES:



Plastics



Pet Food



Construction



Food



Pharmaceutical
and Cosmetics



Chemical

FEATURES

- For handling of material such as pellets, beads, and granules that require protection from shearing; side-inlet with adjustable material flow control ensures accurate rotor pocket filling without material shearing.
- Available in 6 heights, from 14"H to 26"H; and 6 flange diameters from 6" to 16".
- Valve housing fabricated of mild steel.
- CNC-machined components and housing provide precision tolerances; eliminates axial shaft movement, extends maintenance cycles.
- Outboard bearing design protects bearings in high-temperature and high-PSIG applications; removes bearings from direct path of damaging contaminants.
- Easily manages pressure differentials up to 15 PSIG.
- Excellent performance in high-temperature applications up to 750°F.
- Cast iron housing.
- 8-vane rotor with beveled tips and sides.

SPECIFICATIONS:

INLET/OUTLET
FLANGE SIZES:

6 sizes from 6" to 16"

MATERIAL OF
CONSTRUCTION:

Cast Iron,
Stainless Steel

PRESSURE
DIFFERENTIAL:

Up to 15 PSIG

HIGH TEMPERATURE
RANGE:

750°F

astgroup.ca



AST GROUP
OF COMPANIES

905-821-8860



S-Pellet Series



ACS VALVES

OPTIONS

- | | |
|--|--|
| <ul style="list-style-type: none"> • 304 or 316 cast stainless steel valve housing. | <ul style="list-style-type: none"> • Shaft seal types: ACST-4™ glandless Teflon® shaft seal, and packing gland. |
| <ul style="list-style-type: none"> • 6 square-flange sizes from 6" to 15". | <ul style="list-style-type: none"> • Valve housing vent ports. |
| <ul style="list-style-type: none"> • RotorRail™ feature provides tool-less access to rotor and internal surfaces; speeds cleaning and inspection; ensures fast, accurate rotor and endplate re-alignment. | <ul style="list-style-type: none"> • Shaft seal and rotor pocket air purge. |
| <ul style="list-style-type: none"> • Interior coatings: hard chrome and tungsten. | <ul style="list-style-type: none"> • 10-vane, 12-vane, and custom rotor designs. |
| <ul style="list-style-type: none"> • Rotor types: closed-end, shallow-pocket, adjustable-tip, and Teflon®-coated. | <ul style="list-style-type: none"> • Custom drive packages. |
| <ul style="list-style-type: none"> • Adjustable rotor tip types: EPDM rubber, polyurethane, hardened steel, stainless steel, and bronze. | <ul style="list-style-type: none"> • Application-specific accessories: blow-through adapter, shear plate deflector, surge hopper, motion speed switch assembly. |

ROTARY VALVE CAPACITY (cubic feet/hour)

VALVE SIZE (INCHES)	6	6	30	48	60	72	84	96	108	120	132
	8	12	60	96	120	144	168	192	216	240	264
	10	24	120	192	240	288	336	384	432	480	528
	12	45	225	360	450	540	630	720	810	900	990
	14	66	330	528	660	792	924	1056	1188	1320	1452
	16	84	420	672	840	1008	1176	1344	1512	1680	1848
		1	5	8	10	12	14	16	18	20	22
ROTARY SPEED (RPM)											

Capacities shown are based on 100% pocket-fill efficiency. Pocket-fill efficiencies vary by application. To ensure optimal efficiency, contact ACS Valves.

astgroup.ca



905-821-8860



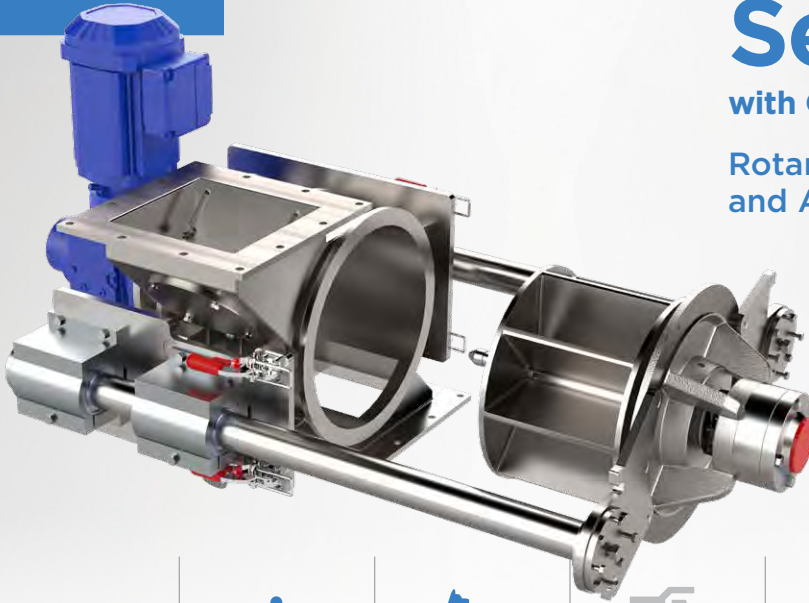
ACS VALVES

Product Specifications

S-Pellet Series

with Quick-Clean RotorRail™

Rotary Valve for Metering, Feeding
and Airlock Applications



SECTOR INDUSTRIES:



Plastics



Pet Food



Construction



Food



Pharmaceutical
and Cosmetics



Chemical

FEATURES

- | | |
|--|---|
| <ul style="list-style-type: none"> For handling of material such as pellets, beads, and granules that require protection from shearing; side-inlet with adjustable material flow control ensures accurate rotor pocket filling without material shearing. | <ul style="list-style-type: none"> CNC-machined components and housing provide precision tolerances; eliminates axial shaft movement, extends maintenance cycles. |
| <ul style="list-style-type: none"> Tool-less, single-step access to rotor and internal surfaces; simplifying cleaning, validation, and inspection. | <ul style="list-style-type: none"> Outboard bearing design protects bearings in high-temperature and high-PSIG applications; removes bearings from direct path of damaging contaminants. |
| <ul style="list-style-type: none"> RotorRail™ feature maintains rotor and endplate alignment during dis-assembly; ensures fast and accurate rotor and endplate re-alignment during re-assembly. | <ul style="list-style-type: none"> Easily manages pressure differentials up to 15 PSIG. |
| <ul style="list-style-type: none"> Available in 5 heights, from 14"H to 22"H; and 5 flange diameters from 6" to 16". | <ul style="list-style-type: none"> Excellent performance in high-temperature applications up to 750°F. |
| <ul style="list-style-type: none"> Valve housing fabricated of mild steel. | <ul style="list-style-type: none"> Cast iron housing. |
| | <ul style="list-style-type: none"> 8-vane rotor with beveled tips and sides. |

SPECIFICATIONS:

INLET/OUTLET
FLANGE SIZES:

5 sizes from 6" to 16"

MATERIAL OF
CONSTRUCTION:

Cast Iron,
Stainless Steel

PRESSURE
DIFFERENTIAL:

Up to 15 PSIG

HIGH TEMPERATURE
RANGE:

750°F

astgroup.ca

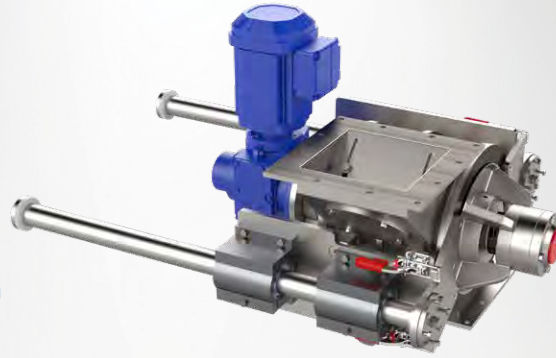


905-821-8860



S-Pellet Series

with Quick-Clean RotorRail™



ACS VALVES

OPTIONS

- | | |
|---|--|
| <ul style="list-style-type: none"> • 304 or 316 cast stainless steel valve housing. | <ul style="list-style-type: none"> • Valve housing vent ports. |
| <ul style="list-style-type: none"> • 5 square-flange sizes from 6" to 14". | <ul style="list-style-type: none"> • Shaft seal and rotor pocket air purge. |
| <ul style="list-style-type: none"> • Interior coatings: hard chrome and tungsten. | <ul style="list-style-type: none"> • 10-vane, 12-vane, and custom rotor designs. |
| <ul style="list-style-type: none"> • Rotor types: closed-end, shallow-pocket, adjustable-tip, and Teflon®-coated. | <ul style="list-style-type: none"> • Custom drive packages. |
| <ul style="list-style-type: none"> • Adjustable rotor tip types: EPDM rubber, polyurethane, hardened steel, stainless steel, and bronze. | <ul style="list-style-type: none"> • Application-specific accessories: blow-through adapter, shear plate deflector, surge hopper, motion speed switch assembly. |
| <ul style="list-style-type: none"> • Shaft seal types: ACST-4™ glandless Teflon® shaft seal, and packing gland. | |

ROTARY VALVE CAPACITY: FLANGE DESIGN (cubic feet/hour)

VALVE SIZE (INCHES)	6	6	30	48	60	72	84	96	108	120	132
	8	12	60	96	120	144	168	192	216	240	264
	10	24	120	192	240	288	336	384	432	480	528
	12	45	225	360	450	540	630	720	810	900	990
	14	66	330	528	660	792	924	1056	1188	1320	1452
		1	5	8	10	12	14	16	18	20	22
ROTARY SPEED (RPM)											

Capacities shown are based on 100% pocket-fill efficiency. Pocket-fill efficiencies vary by application. To ensure optimal efficiency, contact ACS Valves.

BT Series

Rotary Valve for Metering and Airlock Applications

The BT Series valves ensure optimal bulk density and throughput of hard-to-convey material; a return-side vent vents leaked air, maximizing air flow through the rotor, improving material flow.



SECTOR INDUSTRIES:



Plastics



Pet Food



Construction



Food



Pharmaceutical and Cosmetics



Chemical

FEATURES

- 12-vane rotary valve and return-side vent port design significantly reduce air leakage and ensure optimal bulk density and material feed efficiency of hard-to-convey materials.
- Steep-angled inlet flange aids material infeed; improves material flow performance.
- Available in 2 heights, 16.14"H and 18.50"H; and 2 flange diameters, 8" to 10".
- Valve housing cast in North America; ensures superior strength and solidification of housing's metallurgy.

- CNC-machined components and housing provide precision tolerances; eliminates axial shaft movement, extends maintenance cycles.
- Outboard bearing design protects bearings in high-temperature and high-PSIG applications; removes bearings from direct path of damaging contaminants.
- Easily manages pressure differentials up to 20 PSIG.
- Excellent performance in high-temperature applications up to 500°F.

SPECIFICATIONS:

INLET/OUTLET FLANGE SIZES:	MATERIAL OF CONSTRUCTION:	PRESSURE DIFFERENTIAL:	HIGH TEMPERATURE RANGE:
2 sizes, 8" and 10"	Cast Iron, Stainless Steel	Up to 20 PSIG	500°F

Product Specifications

BT Series

Rotary Valve for Metering
and Airlock Applications



ACS
VALVES

OPTIONS

- 304 or 316 cast stainless steel valve housing.
- No. 4 finish on all rotor surfaces.
- Interior coating: hard chrome.
- Adjustable rotor tips.
- Custom drive packages.
- Application-specific accessories: motion speed switch assembly.

astgroup.ca

 **AST GROUP**
OF COMPANIES

905-821-8860

 **Air Separation
Technologies Inc.**
astcanada.ca

 **AST**
Engineering Inc.
astengineering.ca

 **AST**
Mechanical Inc.
astmechanical.ca

 **STEVENSON SPRINKLER**
& Fire Protection Ltd.
stevensonssprinkler.ca

ACS VALVES

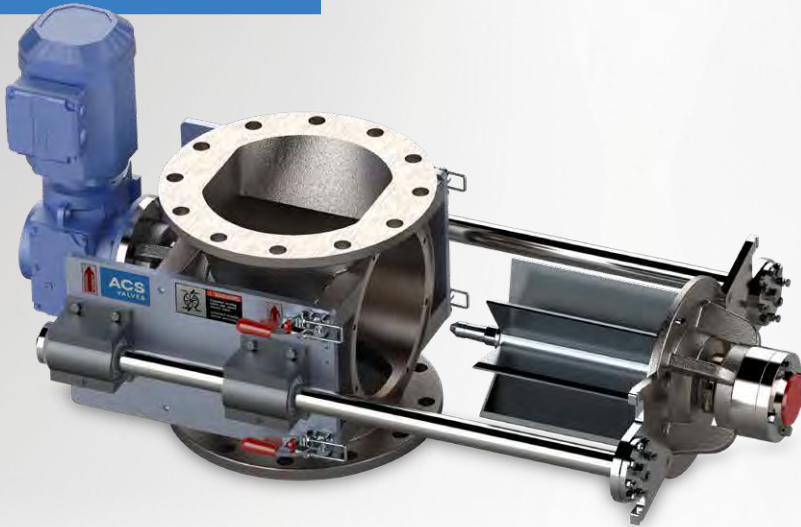
Product Specifications

BT Series

with Quick-Clean RotorRail™

Rotary Valve for Metering and Airlock Applications

The BT Series with Quick-Clean RotorRail ensures optimal bulk density and throughput of hard-to-convey material with simplified tool-less cleaning. A return-side vent vents leaked air, maximizing air flow through the rotor, improving material flow.



SECTOR INDUSTRIES:



Plastics



Pet Food



Construction



Food



Pharmaceutical and Cosmetics



Chemical

FEATURES

- Tool-less, single-step access to rotor and internal surfaces; simplifying cleaning, validation, and inspection.
- RotorRail™ feature maintains rotor and endplate alignment during dis-assembly; ensures fast and accurate rotor and endplate re-alignment during re-assembly.
- 12-vane rotary valve and return-side vent port design significantly reduce air leakage and ensure optimal bulk density and material feed efficiency of hard-to-convey materials.
- Steep-angled inlet flange aids material infeed; improves material flow performance.
- Available in 2 heights, 16.14”H and 18.50”H; and 2 flange diameters, 8” to 10”.
- Valve housing cast in North America; ensures superior strength and solidification of housing’s metallurgy.
- CNC-machined components and housing provide precision tolerances; eliminates axial shaft movement, extends maintenance cycles.
- Outboard bearing design protects bearings in high-temperature and high-PSIG applications; removes bearings from direct path of damaging contaminants.
- Easily manages pressure differentials up to 20 PSIG.
- Excellent performance in high-temperature applications up to 500°F.

SPECIFICATIONS:

INLET/OUTLET
FLANGE SIZES:

2 sizes, 8” and 10”

MATERIAL OF
CONSTRUCTION:

Cast Iron,
Stainless Steel

PRESSURE
DIFFERENTIAL:

Up to 10 PSIG

HIGH TEMPERATURE
RANGE:

500°F

astgroup.ca



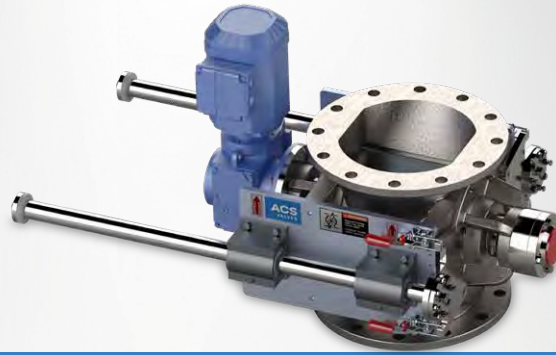
905-821-8860



BT Series

with Quick-Clean RotorRail™

Rotary Valve for Metering and Airlock Applications



OPTIONS

- 304 or 316 cast stainless steel valve housing.
- No. 4 finish on all rotor surfaces.
- Interior coating: hard chrome.
- Adjustable rotor tips.
- Custom drive packages.
- Application-specific accessories: motion speed switch assembly.

ROTARY VALVE CAPACITY : ROUND FLANGE DESIGN (cubic feet/hour)

VALVE SIZE (INCHES)	8	12	60	96	120	144	168	192	216	240	264
	10	24	120	192	240	288	336	384	432	480	528
		1	5	8	10	12	14	16	18	20	22
	ROTARY SPEED (RPM)										

Capacities shown are based on 100% pocket-fill efficiency. Pocket-fill efficiencies vary by application. To ensure optimal efficiency, contact ACS Valves.

ACS VALVES

Product Specifications

SD Series

Rotary Valve for Metering and Airlock Applications



SECTOR INDUSTRIES:



Plastics



Pet Food



Construction



Food



Pharmaceutical and Cosmetics



Chemical

FEATURES

- Available in 4 heights, from 10"H to 18 1/4"H; and 4 square-flange sizes from 6" to 12".
- This ACS Valves Pre-fit Performance™ Series valve enables simple and fast drop-in replacement of Meyer® type SD rotary valves.
- Valve housing cast in North America; ensures superior strength and solidification of housing's metallurgy.
- CNC-machined components and housing provide precision tolerances; eliminates axial shaft movement, extends maintenance cycles.
- Excellent performance in high-temperature applications up to 250°F.
- Cast iron housing.
- 6-vane or 8-vane rotor with beveled tips and sides.
- Direct-drive motor package.

SPECIFICATIONS:

INLET/OUTLET FLANGE SIZES:

4 sizes from 6" to 12"

MATERIAL OF CONSTRUCTION:

Cast Iron, Stainless Steel

PRESSURE DIFFERENTIAL:

-

HIGH TEMPERATURE RANGE:

250°F

astgroup.ca



905-821-8860



Product Specifications

SD Series

Rotary Valve for Metering and Airlock Applications



ROTARY VALVE CAPACITY (cubic feet/hour)

VALVE SIZE (INCHES)	6	6	30	48	60	72	84	96	108	120	132
	8	12	60	96	120	144	168	192	216	240	264
	10	24	120	192	240	288	336	384	432	480	528
	12	45	225	360	450	540	630	720	810	900	990
		1	5	8	10	12	14	16	18	20	22
	ROTARY SPEED (RPM)										

Capacities shown are based on 100% pocket-fill efficiency. Pocket-fill efficiencies vary by application. To ensure optimal efficiency, contact ACS Valves.

astgroup.ca



905-821-8860

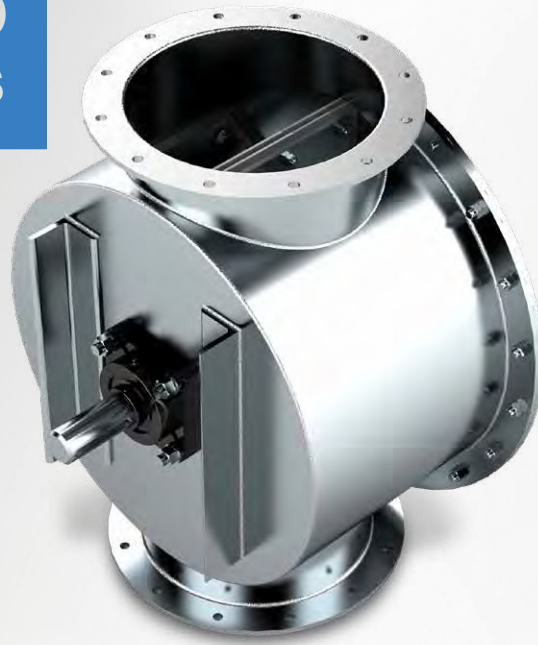


ACS VALVES

Product Specifications

FT Series

Rotary Valve for Feeding
and Metering Applications



SECTOR INDUSTRIES:



Plastics



Pet Food



Construction



Food



Pharmaceutical
and Cosmetics



Chemical

FEATURES

- Available in 9 heights, from 13" to 49 1/2"; and 10 flange diameters from 4" to 30".
- Rotor with flex-tip wiper vanes produces static pressures up to 18" WG.
- EPDM synthetic wiper vanes resist material abrasion; extend maintenance cycles.
- Industrial-duty housing constructed of mild steel; housing sideplate removes for easy access.
- Chain-drive, right-angle gearmotor provides reliable operation.
- Excellent performance in applications up to 200°F.

SPECIFICATIONS:

INLET/OUTLET
FLANGE SIZES:

10 sizes from 4" to 30"
or custom

MATERIAL OF
CONSTRUCTION:

Mild Steel,
Stainless Steel

PRESSURE
DIFFERENTIAL:

Up to 18" WG

HIGH TEMPERATURE
RANGE:

500°F

astgroup.ca



905-821-8860



FT Series

Rotary Valve for Feeding and Metering Applications



ACS VALVES

OPTIONS

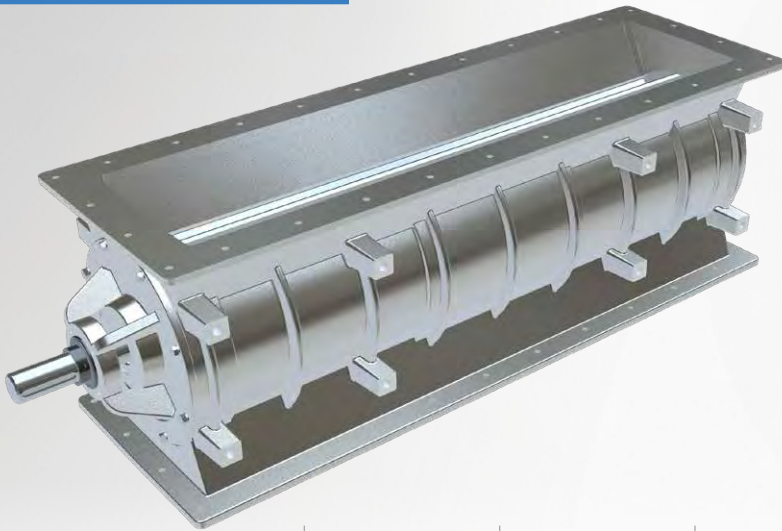
- Square flange design: available in 9 sizes from 4" to 30"; custom sizes available.
- 304 or 316 stainless steel housing construction.
- Wiper types: polyurethane or EPDM; standard or extended tip; dual-rotor wiper blades.
- Drive types: direct-drive, horizontal drive, or variable-frequency drive.
- High-temperature performance, up to 500°F.
- Custom motor types and configurations.

ROTARY VALVE CAPACITY (cubic feet/hour)

VALVE SIZE (INCHES)	4	.10
	6	.23
	8	.64
	10	1.34
	12	2.46
	14	6.2
	16	6.2
	20	12.6
	24	21.0
30	42.4	

DTFV Series (Discharge Trough Feeder Valve)

Rotary Valve for Feeding
and Metering Applications



SECTOR INDUSTRIES:



Plastics



Pet Food



Construction



Food



Pharmaceutical
and Cosmetics



Chemical

FEATURES

- For extremely high-volume material handling applications where short-length screw conveyors or conventional rotary valve material handling capacities are not sufficient.
- Valve housing cast in North America; ensures superior strength and solidification of housing's metallurgy, prevents housing distortion.
- CNC-machined components and housing provide precision tolerances; eliminates axial shaft movement, extends maintenance cycles.
- Outboard bearing design protects bearings in high-temperature and high-PSIG applications; removes bearings from direct path of damaging contaminants.
- Large shaft diameter eliminates rotor deflection; reduces rotor tip wear and bearing seal leakage.
- ACST-4™ glandless Teflon® shaft seal; reduces maintenance and protects bearings from wear.
- Cast iron housing.
- 6-vane or 8-vane rotor with beveled tips and sides.
- TEFC geared motor, side-wall mounted to valve body; with chain drive and safety enclosure.

SPECIFICATIONS:

INLET/OUTLET
FLANGE SIZES:

3 sizes, 12" x 24"
to 12" x 48"

MATERIAL OF
CONSTRUCTION:

Cast Iron,
Stainless Steel

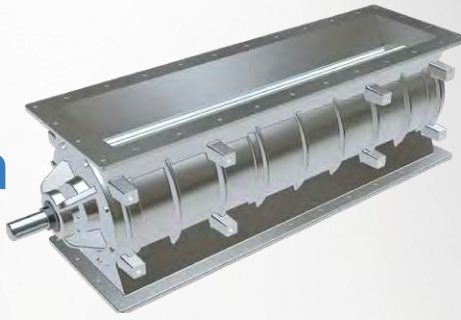
PRESSURE
DIFFERENTIAL:

-

HIGH TEMPERATURE
RANGE:

450°F

DTFV Series (Discharge Trough Feeder Valve)



ACS
VALVES

OPTIONS

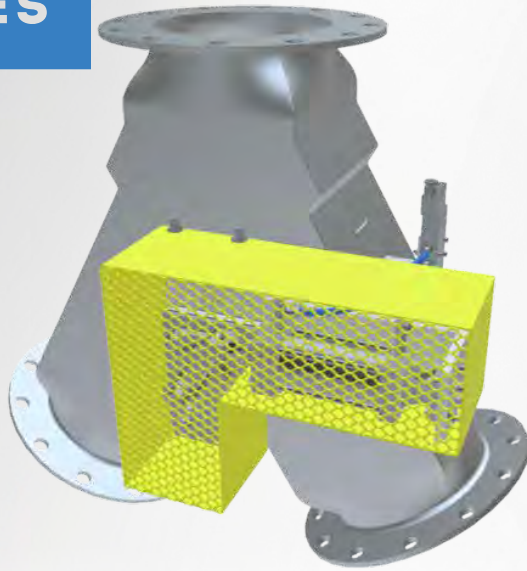
- Valve housing material types: 304 or 316 cast stainless steel.
- Interior coating: hard chrome.
- Rotor material types: 304 or 316 stainless steel.
- Adjustable rotor tip types: hardened steel, 304 or 316 stainless steel.
- Direct-drive motor package.

ROTARY VALVE CAPACITY (cubic feet/hour)

VALVE SIZE (INCHES)	12"x24"	78	390	624	780	936	1092	1248	1404	1560	1716
	12"x36"	102	510	816	1020	1224	1428	1632	1836	2040	2244
	12"x48"	135	675	1080	1350	1620	1890	2160	2430	2700	2970
		1	5	8	10	12	14	16	18	20	22
ROTARY SPEED (RPM)											

Gravity Diverter Valve Y-style Series

For Feeding and
Metering Applications



SECTOR INDUSTRIES:



Plastics



Pet Food



Construction



Food



Pharmaceutical
and Cosmetics



Chemical

FEATURES

- 2-way, Y-style, gravity diverter valve provides automated control of bulk material flow direction; improves efficiency of material feeding and loading operations.
- Available in 4 heights, from 16 5/16"H to 24"H, and 4 square-flange sizes from 6" to 12".
- Available in 30-degree or 45-degree outlet angles.
- 10 ga. carbon steel housing construction; heavy-duty carbon steel flappers with neoprene seal strips and carbon steel seats.
- Air control package includes solenoid, fittings, and tubing; pre-assembled and ready for start-up.
- Excellent performance in high-temperature applications up to 500°F.

SPECIFICATIONS:

INLET/OUTLET
FLANGE SIZES:

4 sizes from 6" to 12"
or custom

MATERIAL OF
CONSTRUCTION:

Carbon Steel,
Stainless Steel

PRESSURE
DIFFERENTIAL:

Up to 30" WG

HIGH TEMPERATURE
RANGE:

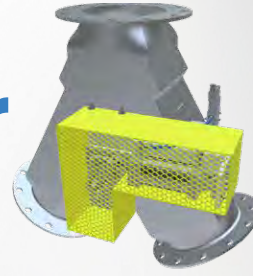
500°F

astgroup.ca



905-821-8860

Gravity Diverter Valve



ACS
VALVES

For Feeding and Metering Applications

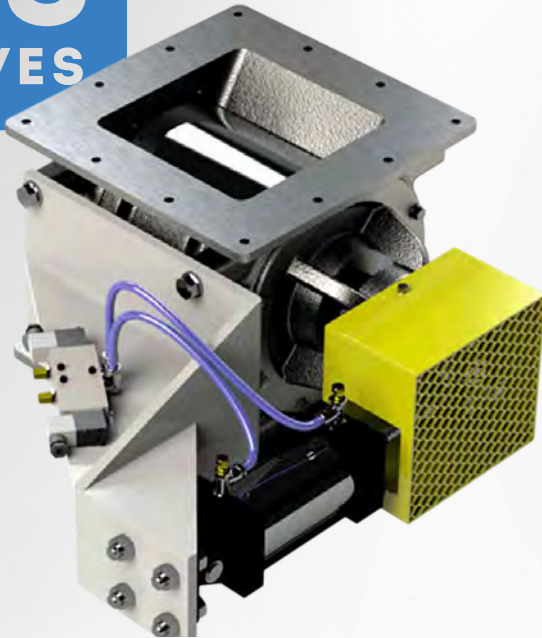
OPTIONS

- Round flange design: available in 4 heights, from 24 7/16"H to 31 7/16"H, and 4 flange diameters from 6" to 12".
- 3-way diverter valve design.
- Custom outlet angle construction, specific to application requirement.
- Valve housing and flapper construction: 304 or 316 stainless steel, carbon steel, or aluminum.
- Abrasion-resistant steel flappers.
- Chain-drive gearmotor and cam design.
- Manual actuator.
- Dual, side-access panels for easy reach into internal housing areas; or single, removable back panel.
- NEMA 4 timer; 115-50/60-1 electrical; power-on light; on/off switch; timer configuration to operate up to 6 valves.

CI-RPV Series

Rotary Valve for Feeding and Metering Applications

Rotary plug valve (RPV) design provides highly accurate, controlled feeding of very free-flowing, abrasive, and high bulk density materials; excellent dust control design.



SECTOR INDUSTRIES:



Plastics



Pet Food



Construction



Food



Pharmaceutical
and Cosmetics



Chemical

FEATURES

- Rotary plug valve (RPV) design provides highly accurate, controlled feeding of very free-flowing, abrasive, and high bulk density materials; excellent dust control design.
- Air-actuated clam-style rotor enables rapid material flow control and exceptional air handling efficiency in high-pressure differential applications.
- Air control package includes solenoid, fittings, and tubing; pre-assembled and ready for start-up.
- Available in 5 heights, from 10"H to 19"H; and 5 square-flange sizes from 6" to 14".
- Valve housing and endplates cast in North America; ensures superior strength and solidification of metallurgy; air cylinder mount fabricated of mild steel.
- CNC-machined components and housing provide precision tolerances; eliminates axial shaft movement.
- Heavy-plate chrome interior.

SPECIFICATIONS:

INLET/OUTLET
FLANGE SIZES:

5 sizes from 6" to 14"

MATERIAL OF
CONSTRUCTION:

Cast Iron,
Stainless Steel

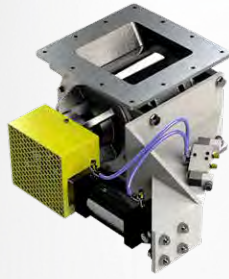
PRESSURE
DIFFERENTIAL:

-

HIGH TEMPERATURE
RANGE:

750°F

CI-RPV Series



ACS VALVES

Rotary Valve for Feeding and Metering Applications

OPTIONS

- 304 or 316 cast stainless steel valve housing.
- Interior coating: hard chrome.
- Actuator types: electrical or manual.

ROTARY VALVE CAPACITY (cubic feet/hour)

VALVE SIZE (INCHES)	6	6	30	48	60	72	84	96	108	120	132
	8	12	60	96	120	144	168	192	216	240	264
	10	24	120	192	240	288	336	384	432	480	528
	12	45	225	360	450	540	630	720	810	900	990
	14	66	330	528	660	792	924	1056	1188	1320	1452
	1	5	8	10	12	14	16	18	20	22	
	ROTARY SPEED (RPM)										

Capacities shown are based on 100% pocket-fill efficiency. Pocket-fill efficiencies vary by application. To ensure optimal efficiency, contact ACS Valves.

ACS VALVES

Product Specifications

Mini 19 Series

Rotary Valve for Feeding and Metering Applications

The Mini 19 Series valves are built to application-specific requirements, including: custom rotor configurations, factory-applied internal coatings, and sanitary materials of construction.



SECTOR INDUSTRIES:



Plastics



Pet Food



Construction



Food



Pharmaceutical and Cosmetics



Chemical

FEATURES

- Available in 2 heights of 5" and 6"; and 2 square-flange sizes of 2" and 3".
- CNC-machined components and housing provide precision tolerances; eliminates axial shaft movement, extends maintenance cycles.
- 6-vane rotor with beveled tips and sides.
- Metering ranges available for all sizes: .0006 through .0233 CFR.

OPTIONS

- 304 or 316 stainless steel valve housing.
- 2 round-flange diameters of 2" and 3".
- Rotor types: closed-end, metering, shallow-pocket.
- Valve housing vent ports.
- Shaft seal and rotor pocket air purge.
- 4-vane, 8-vane, metering-style rotors.
- Custom drive packages.
- Application-specific accessories:
 - blow-through adapter
 - shear plate deflector
 - surge hopper
 - motion speed switch assembly

SPECIFICATIONS:

INLET/OUTLET FLANGE SIZES:

2 sizes, 2" and 3" round or square

MATERIAL OF CONSTRUCTION:

Carbon Steel, Stainless Steel

astgroup.ca

AST GROUP
OF COMPANIES

905-821-8860

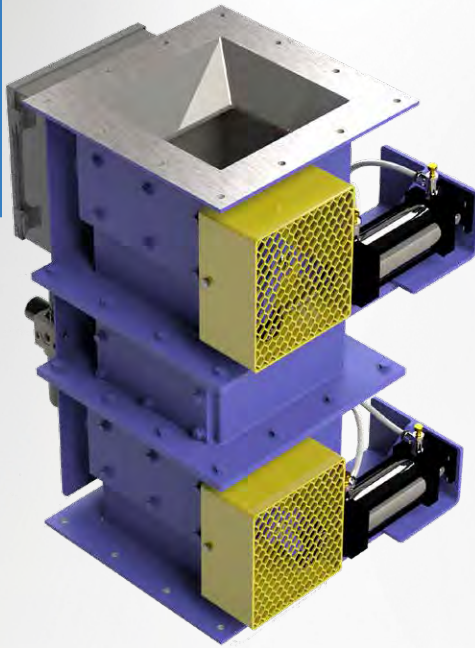
 Air Separation Technologies Inc.
astcanada.ca

 AST Engineering Inc.
astengineering.ca

 AST Mechanical Inc.
astmechanical.ca

 STEVENSON SPRINKLER & Fire Protection Ltd.
stevensonspinkler.ca

ACS VALVES



Product Specifications

Double-Flap Valve Series

Rotary Valve for Feeding and Metering Applications

SECTOR INDUSTRIES:



Plastics



Pet Food



Construction



Food



Pharmaceutical and Cosmetics



Chemical

FEATURES

- Available in 3 heights, from 28 3/4"H to 40 1/4"H; and 6 square-flange sizes from 6" to 16"
- 10 ga. carbon steel housing construction; heavy-duty carbon steel flappers with neoprene seal strips and carbon steel seats.
- High-capacity material chamber with inspection door improves material transfer volume.
- Pneumatic operation, ships ready for start-up, including: complete factory assembled solenoid valve, timer, filter regulator, flow control valve, lubricator, and regulator.
- Excellent performance in high-temperature applications up to 500°F.

OPTIONS

- 304 or 316 stainless steel, or special heavy-duty valve housing and flapper construction.
- Single-flap design.
- Abrasion-resistant steel flappers
- NEMA 4 timer; 115-50/60-1 electrical; power-on light; on/off switch; timer configuration to operate up to 6 valves

ROTARY VALVE CAPACITY (cubic feet/hour)

VALVE SIZE (INCHES)	ROTARY VALVE CAPACITY (cubic feet/hour)	
	6	50
	8	100
	10	200
	12	350
	14	600
	16	790
ROTARY SPEED (RPM)		

Capacities shown are based on 100% pocket-fill efficiency. Pocket-fill efficiencies vary by application. To ensure optimal efficiency, contact ACS Valves.

SPECIFICATIONS

INLET/OUTLET
FLANGE SIZES:

6 sizes from 6" to 16"
or custom

MATERIAL OF
CONSTRUCTION:

Carbon Steel,
Stainless Steel

PRESSURE
DIFFERENTIAL:

Up to 30" WG

HIGH TEMPERATURE
RANGE:

500°F

astgroup.ca



AST GROUP
OF COMPANIES

905-821-8860



ACS VALVES

Product Specifications

CDC-CI Series

Rotary Valve for Metering,
Feeding, and Airlock Applications



SECTOR INDUSTRIES:



Plastics



Pet Food



Construction



Food



Pharmaceutical
and Cosmetics



Chemical

FEATURES

- Available in 4 heights, from 12" to 25"; and 4 flange diameters from 6" to 12".
- This ACS Valves Pre-fit Performance™ Series valve enables simple and fast drop-in replacement of Carter Day® type CI rotary valves.
- Large housing barrel enables 3-times more material throughput (CFR) than conventional valve housings with same flange opening.
- Valve housing cast in North America; ensures superior strength and solidification of housing's metallurgy.
- CNC-machined components and housing provide precision tolerances; eliminates axial shaft movement, extends maintenance cycles.
- Easily manages pressure differentials up to 15 PSIG.
- Excellent performance in high-temperature applications up to 500°F.
- Cast iron housing.
- 8-vane rotor, complete with beveled tips and sides.
- Unique shaft seal design results in lowered maintenance and downtime costs.
- Round flanges aid material flow, improve cleaning.

SPECIFICATIONS:

INLET/OUTLET
FLANGE SIZES:

4 sizes from 6" to 12"

MATERIAL OF
CONSTRUCTION:

Cast Iron,
Stainless Steel

PRESSURE
DIFFERENTIAL:

Up to 15 PSIG

HIGH TEMPERATURE
RANGE:

500°F

astgroup.ca



905-821-8860



CDC-CI Series



ACS VALVES

OPTIONS

- | | |
|---|--|
| <ul style="list-style-type: none">• 304 or 316 cast stainless steel valve housing. | <ul style="list-style-type: none">• Valve housing vent ports. |
| <ul style="list-style-type: none">• Interior coatings: hard chrome, tungsten, and nickel. | <ul style="list-style-type: none">• 6-vane, 10-vane, or 12-vane rotor. |
| <ul style="list-style-type: none">• Rotor types: closed-end, metering, shallow-pocket, adjustable-tip, and Teflon®-coated. | <ul style="list-style-type: none">• Direct-drive and custom drive packages. |
| <ul style="list-style-type: none">• Adjustable rotor tip types: EPDM rubber, polyurethane, hardened steel, stainless steel, and bronze. | <ul style="list-style-type: none">• Application-specific accessories: blow-through adapter, shear plate deflector, surge hopper, motion speed switch assembly. |
| <ul style="list-style-type: none">• Shaft seal types: ACST-4™ glandless Teflon® shaft seal, and packing gland. | |

ACS VALVES



Product Specifications

Sanitary CDC-CI Series

Rotary Valve for Metering/ Feeding and Airlock Applications

The Sanitary CDC-CI series drop-in valve is designed for applications that require very high-volume material throughput. It features an enlarged housing barrel and comes in cast-iron, 304 or 316 stainless steel for increased sanitation.

SECTOR INDUSTRIES:



Plastics



Pet Food



Construction



Food



Pharmaceutical
and Cosmetics



Chemical

FEATURES

- 304 or 316 stainless steel valve housing, cast in North America, ensures superior housing solidification and metallurgy; eliminates pits and dimples where contaminants could accumulate.
- This ACS Valves Pre-fit Performance™ Series valve enables simple and fast drop-in replacement of Carter Day® type CI rotary valves.
- Large housing barrel enables 3-times more material throughput (CFR) than conventional valve housings with same flange opening.
- Product contact surfaces of the housing, and all rotor surfaces, are a No. 4 finish.
- Available in 4 heights, from 12" to 25"; and 4 flange diameters from 6" to 12".
- Valve housing cast in North America; ensures superior strength and solidification of housing's metallurgy.
- CNC-machined components and housing provide precision tolerances; eliminates axial shaft movement, extends maintenance cycles.
- Easily manages pressure differentials up to 15 PSIG.
- Excellent performance in high-temperature applications up to 500°F.
- 8-vane rotor, complete with beveled tips and sides.
- Unique shaft seal design results in lowered maintenance and downtime costs.
- Round flanges aid material flow, improve cleaning.

SPECIFICATIONS:

INLET/OUTLET
FLANGE SIZES:

4 sizes from 6" to 12"

MATERIAL OF
CONSTRUCTION:

Stainless Steel

PRESSURE
DIFFERENTIAL:

Up to 15 PSIG

HIGH TEMPERATURE
RANGE:

500°F

astgroup.ca



905-821-8860



Sanitary CDC-CI Series



ACS
VALVES

OPTIONS

- | | |
|--|--|
| <ul style="list-style-type: none">• Cast iron valve housing. | <ul style="list-style-type: none">• Shaft seal types: ACST-4™ glandless Teflon® shaft seal, and packing gland. |
| <ul style="list-style-type: none">• No. 4 finish on internal product contact surfaces of housing, and all rotor surfaces. | <ul style="list-style-type: none">• Valve housing vent ports. |
| <ul style="list-style-type: none">• Interior coatings: hard chrome, tungsten. | <ul style="list-style-type: none">• 6-vane, 10-vane, or 12-vane rotor. |
| <ul style="list-style-type: none">• Rotor types: closed-end, metering, shallow-pocket, adjustable-tip, and Teflon®-coated. | <ul style="list-style-type: none">• Direct-drive and custom drive packages. |
| <ul style="list-style-type: none">• Adjustable rotor tip types: hardened steel, stainless steel, and bronze. | <ul style="list-style-type: none">• Application-specific accessories: blow-through adapter, shear plate deflector, surge hopper, motion speed switch assembly. |

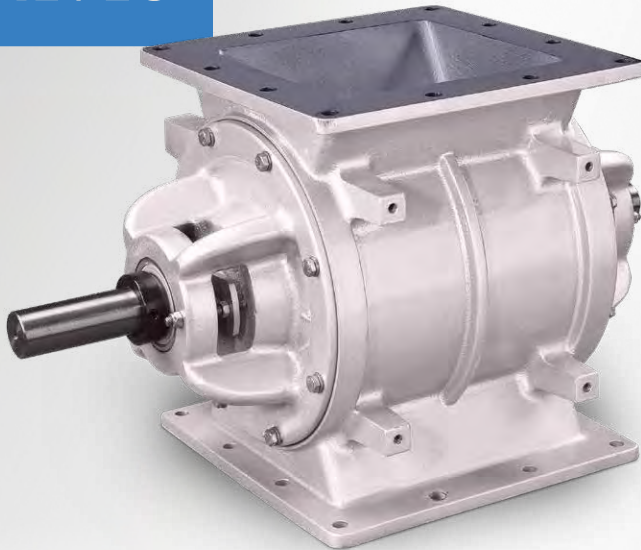
ACS VALVES

Product Specifications

P Series Valve

Rotary Valve for Metering, Feeding, and Airlock Applications

The P Series valves, available with round or square flange, are built to application-specific requirements, including: custom rotor configurations, factory-applied internal coatings, and sanitary materials of construction.



SECTOR INDUSTRIES:



Plastics



Pet Food



Construction



Food



Pharmaceutical
and Cosmetics



Chemical

FEATURES

- Pre-fit Performance™ housings provide all of the in-use advantages built into every ACS valve, plus the assurance of precise alignment and fast installation when replacing comparable Prater-Sterling valves.
- Available in round or square flange designs.
- Available in 4 heights, from 10"H to 18 1/8"H; and 3 flange sizes from 6"H to 12"H.
- Valve housing cast in North America; ensures superior strength and solidification of housing's metallurgy.
- CNC-machined components and housing provide precision tolerances; eliminates axial shaft movement, extends maintenance cycles.
- Outboard bearing design protects bearings in high-temperature and high-PSIG applications; removes bearings from direct path of damaging contaminants.
- Large shaft diameter eliminates rotor deflection; reduces rotor tip wear and bearing seal leakage.
- Easily manages pressure differentials up to 15 PSIG; super-duty series up to 22 PSIG.
- Excellent performance in high-temperature applications up to 750°F.
- Cast iron housing.
- 8-vane rotor with beveled tips and sides.

SPECIFICATIONS:

INLET/OUTLET
FLANGE SIZES:

3 sizes from 6" to 12"

MATERIAL OF
CONSTRUCTION:

Cast Iron,
Stainless Steel

PRESSURE
DIFFERENTIAL:

Up to 22 PSIG

HIGH TEMPERATURE
RANGE:

750°F

astgroup.ca

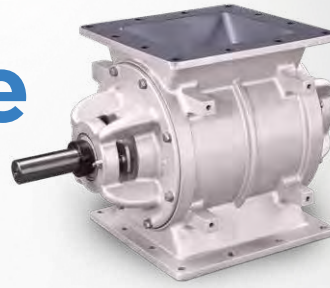


905-821-8860



P Series Valve

Rotary Valve for Metering,
Feeding, and Airlock Applications



ACS
VALVES

OPTIONS

- RotorRail™ design enables tool-less access to the rotor and all internal surfaces of the housing without time-consuming disassembly or removal from service.
- 304 or 316 cast stainless steel valve housing.
- No. 4 finish on internal product contact surfaces of housing, and all rotor surfaces.
- Interior coating: hard chrome, tungsten, nickel, and epoxy.
- Rotor types: closed-end, shallow-pocket, adjustable-tip, and Teflon® coated.
- Adjustable rotor tip types: EPDM rubber, polyurethane, hardened steel, and stainless steel.
- Shaft seal types: ACST-4™ glandless Teflon® shaft seal, and packing gland.
- 6-vane or 10-vane rotor.

ROTARY VALVE CAPACITY (cubic feet/hour)

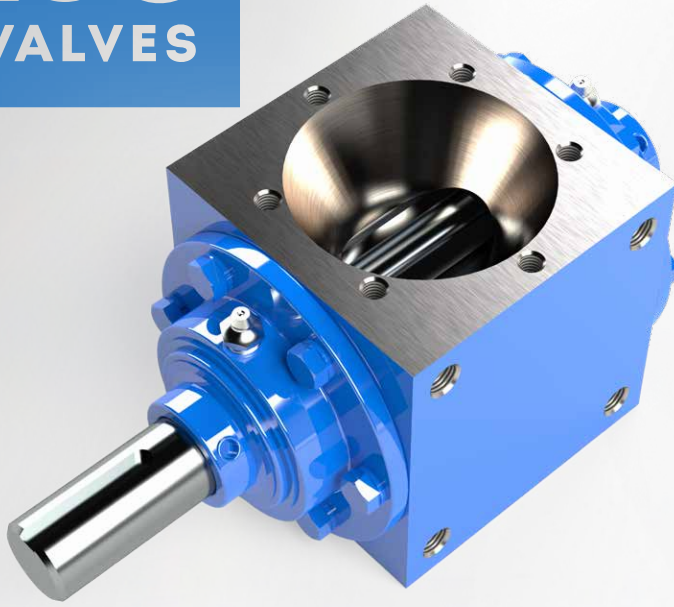
VALVE SIZE (INCHES)	6	6	30	48	60	72	84	96	108	120	132
	8	12	60	96	120	144	168	192	216	240	264
	10	24	120	192	240	288	336	384	432	480	528
	12	45	225	360	450	540	630	720	810	900	990
	1	5	8	10	12	14	16	18	20	22	
	ROTARY SPEED (RPM)										

Capacities shown are based on 100% pocket-fill efficiency. Pocket-fill efficiencies vary by application. To ensure optimal efficiency, contact ACS Valves.

Micro-ingredient Valve

Low capacity metering for bulk ingredients

The micro-ingredient valve from ACS Valves is designed for testing pilot conveying equipment, and for accurately metering small amounts of fine-grained material into larger batches.



SECTOR INDUSTRIES:



Plastics



Pet Food



Construction



Food



Pharmaceutical and Cosmetics



Chemical

FEATURES

- Mild Steel, 4140, Aluminum or Stainless construction
- Round inlet & outlets standard
- Metering style rotors only
- Lip seal type shaft seal
- 0.16 HP Direct drive package
- Rotor pocket purge connection
- Weighted-style pressure relief valve maintains tight seal till tank pressure reaches relief setting.
- Rounded rotor pockets

- Metering ranges available for all sizes: .0005 through .00238 CFR
- Airlock
- 8 slots
- Direct-drive arrangement
- Compact design
- Accurate rates
- Easy installation

SPECIFICATIONS:

INLET/OUTLET
FLANGE SIZES:

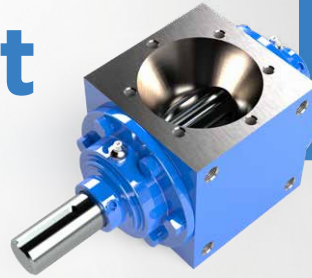
1.5" to 3"

MATERIAL OF
CONSTRUCTION:

Aluminium,
Stainless Steel

Micro-ingredient Valve

Low capacity metering for bulk ingredients



ACS VALVES

OPTIONS

- | | |
|--|---|
| <ul style="list-style-type: none"> • High temperature designs, bearings, seals & clearances | <ul style="list-style-type: none"> • Square inlet |
| <ul style="list-style-type: none"> • Housing vent port | <ul style="list-style-type: none"> • Sanitary grade |
| <ul style="list-style-type: none"> • 1 1/2", 2", 2 1/2" and 3" inlet and outlet available | <ul style="list-style-type: none"> • Open-pocket rotor |
| <ul style="list-style-type: none"> • Tungsten-coated rotor | <ul style="list-style-type: none"> • Chain drive for 20 RPM output |
| | <ul style="list-style-type: none"> • Tungsten-coated interior |

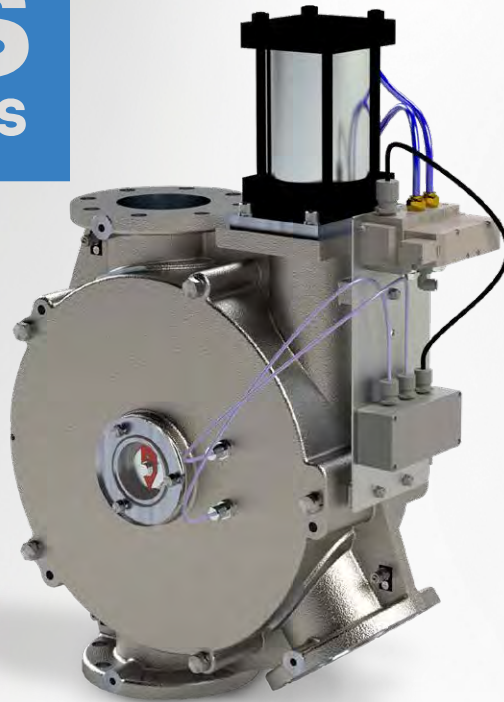
VALVE SIZE (inches)

1.5"
2"
2.5"
3"

Channel Changer Valve

Plug Type Diverter

The Channel Changer from ACS Valves is a plug type divert (PTD) designed to re-route dry materials—such as pellets, powders, kibble and granules—without any degradation. Built for pneumatic conveying systems, the Channel Changer enables more efficient processing.



SECTOR INDUSTRIES:



Plastics



Pet Food



Construction



Food



Pharmaceutical
and Cosmetics



Chemical

FEATURES

- | | |
|---|---|
| <ul style="list-style-type: none"> Aluminum housing and endplates Internal pipe diverters are aluminum with 316 stainless steel liners All product contact areas are stainless steel Food-grade seal Air-operated, complete with solenoids and reed switches Completely enclosed design -- no moving parts Precision machined Pressure surge rated for 45 psi Temperature rated to 215°F (100°C) | <ul style="list-style-type: none"> Rotates on 35° User friendly, easy maintenance Quick clean Maximum safety and weather tightness Easy Enables more efficient manufacturing No product degradation Sanitary Slim design for compact spaces |
|---|---|

SPECIFICATIONS:

INLET/OUTLET
FLANGE SIZES:

4 sizes from 4" to 8"

MATERIAL OF
CONSTRUCTION:

Aluminum,
Stainless Steel

PRESSURE
DIFFERENTIAL:

10 bar g (145 PSI)

HIGH TEMPERATURE
RANGE:

215°F

Channel Changer Valve

Plug Type Diverter



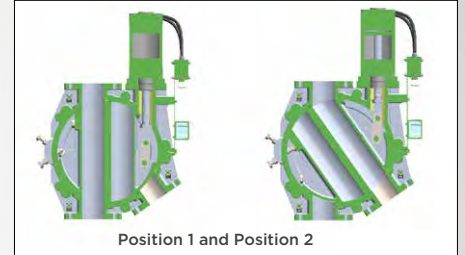
ACS VALVES

OPTIONS

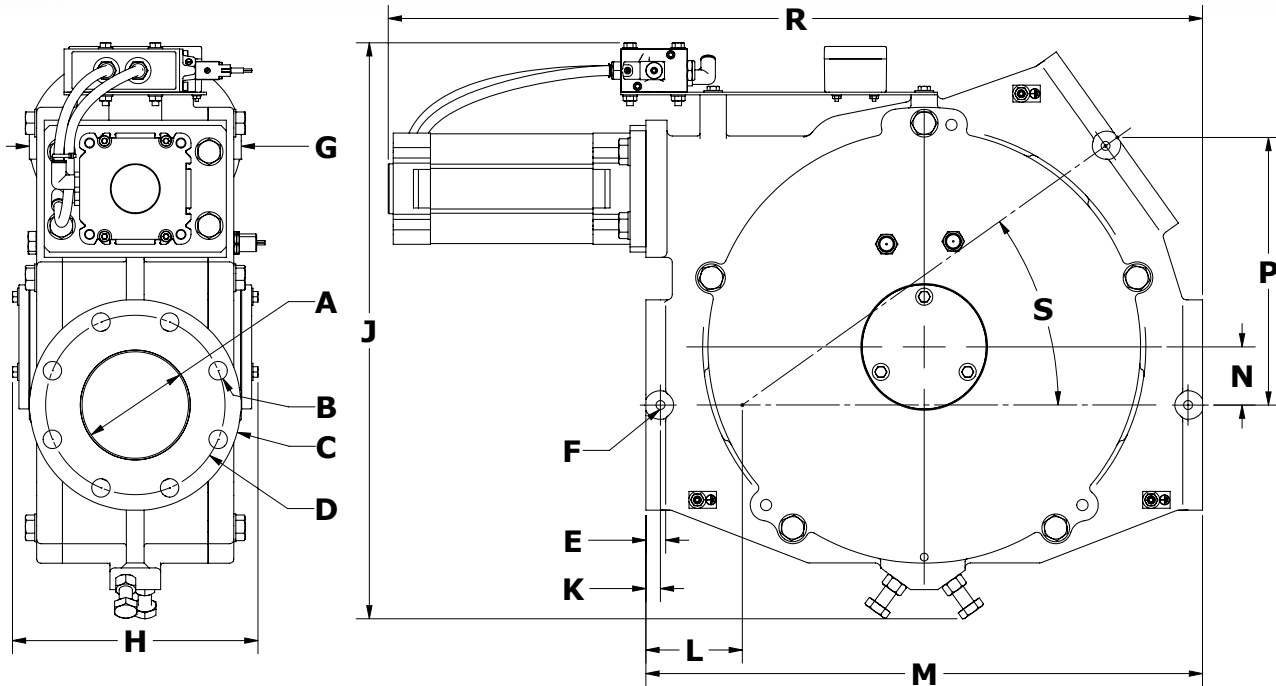
- Wear-resistant pipe liners
- High-temperature construction
- Imperial or metric

VALVE SIZE (inches)

- 4"
- 5"
- 6"
- 8"



PTD DIMENSION SHEET

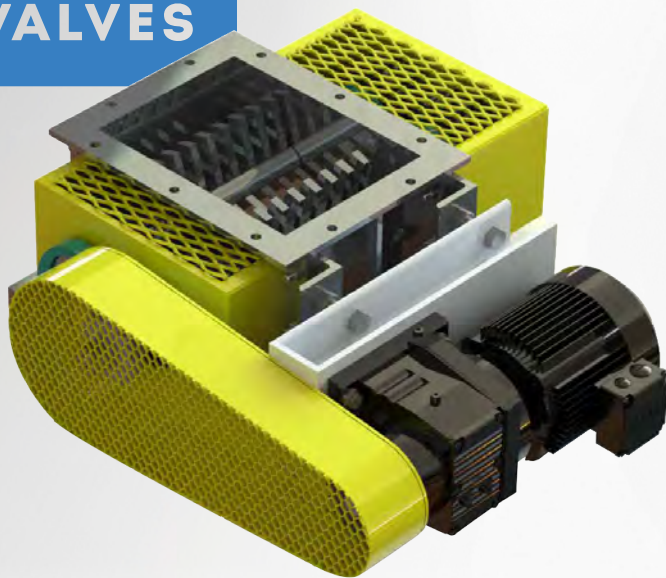


TYPE	A"	B"	C"	D"	E"	F"	G"	H"	J"	K"	L"	M"	N"	P"	R"	S°
4"	4.03	3/4	9	7-1/2	15/16	7/16-20 UNC	9-1/16	10-3/4	24-1/8	9/16	3-7/16	21-1/4	2-1/4	10-1/4	32-1/2	35
5"	5.05	7/8	10	8-1/2	15/16	1/2-13 UNC	10-1/16	11-5/8	27-5/16	11/16	4-9/16	26-3/8	2-3/4	12-11/16	38-9/16	35.5
6"	6.07	7/8	11	9-1/2	1	1/2-13 UNC	11-1/2	13-1/16	30-1/8	13/16	4-3/4	29-1/2	3-1/4	14-1/2	42-11/16	35.8
8"	7.98	7/8	13-1/2	11-3/4	1-1/8	1/2-13 UNC	13-3/4	15-11/16	39-9/16	1	5-1/4	39-3/8	4-1/2	19-1/2	51	34.8

Piece Breaker Flex

Flexing our muscles with compacted bulk materials

The Piece Breaker Flex is a heavy duty lump breaker valve. With its dual rotor design, this valve reduces agglomerated lumps quickly and easily. The result is improved material flow for efficient processing and enhanced product quality.



SECTOR INDUSTRIES:



Plastics



Pet Food



Construction



Food



Pharmaceutical
and Cosmetics



Chemical

FEATURES

- Reduces oversize particles without degradation to product.
- Heavy-duty.
- Dual-shaft configuration.
- OSHA compliant.
- Speedy in-line compact arrangement.
- Heavy-duty robust construction.
- Available in mild steel or 304SS construction.
- Affordably priced.
- Wear resistant options, hard chrome interior, tungsten carbide coating and AR 400 construction rotors.
- Reduce material size.
- Improve product flow.
- Reduce maintenance.
- Efficient material processing.
- Improves material consistency.
- Enhance the quality of the product.
- Greater energy efficiency.

OPTIONS

- Air purge shaft seals
- Wear-resistant option (housing and blades).
- Available in food-grade construction.

SIZES AND FLOW RATE (Cubic feet/min)

Valve Size (inches)	Feet per minute (Ft ³ /Min)
1410	8.2 - 18

SPECIFICATIONS:

INLET/OUTLET
FLANGE SIZES:

Custom sizes available

MATERIAL OF
CONSTRUCTION:

Mild Steel or 304SS
construction

Wood Chip Feeder Valve

Rotary valve for forestry feeder and recycling applications

The Wood Chip Feeder valve is designed for heavy duty forestry applications. It applies positive shearing action to ensure that wood is not getting stuck between the rotor and barrel. Machined with a A36 rotor vanes, tipped with 308 stainless steel and chrome coatings, this rotary valve is built to last.



SECTOR INDUSTRIES:



Forestry



Recycling

FEATURES

- Heavy-duty chromed barrel
- Adjustable top and bottom shearing knives
- Sealed access door for top knife
- Tapered outboard roller bearings
- Shaft seal packing gland
- Removeable and replaceable drive shaft
- Brass end seals with external adjustment capabilities
- Stainless steel tipped rotor with hard surface for extended life
- Direct drive

OPTIONS

- Injector-tee / blow-through adaptor
- Mounting stand for pneumatic conveying
- Stocked configuration is a RH rotor helix and CCW rotation (RH/CCW) – other configurations available: RH/CW, LH/CCW, LH/CW

BENEFITS

- Positive shear action
- Wide range of sizes and capacities



SPECIFICATIONS:

INLET/OUTLET FLANGE SIZES:

17

MATERIAL OF CONSTRUCTION:

Tipped stainless steel and chrome

PRESSURE DIFFERENTIAL:

15psi

HIGH TEMPERATURE RANGE:

Up to 500 °F

Wood Chip Feeder Valve

Rotary valve for forestry feeder and recycling applications

DIMENSIONS

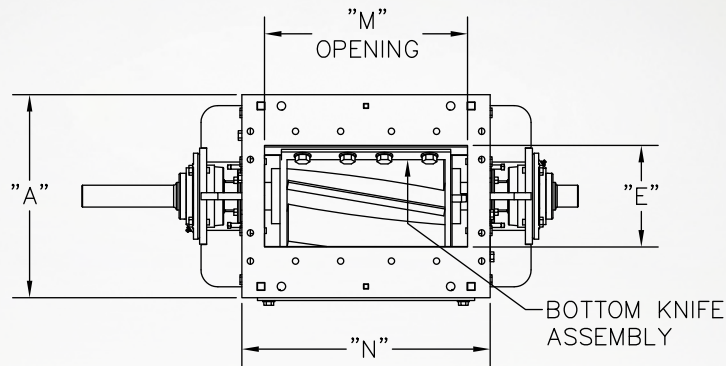
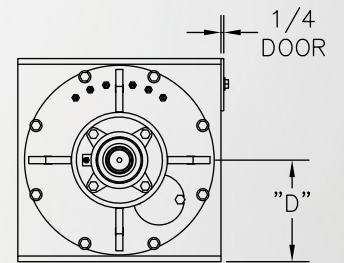
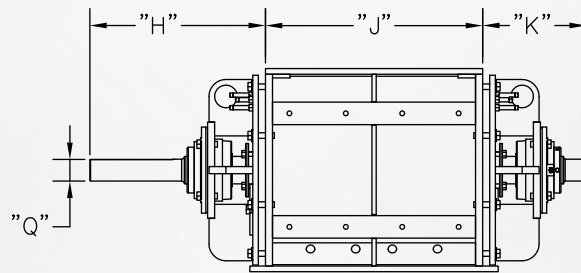
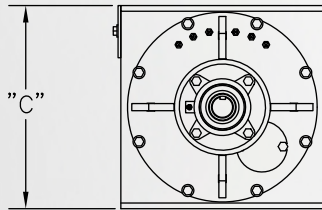
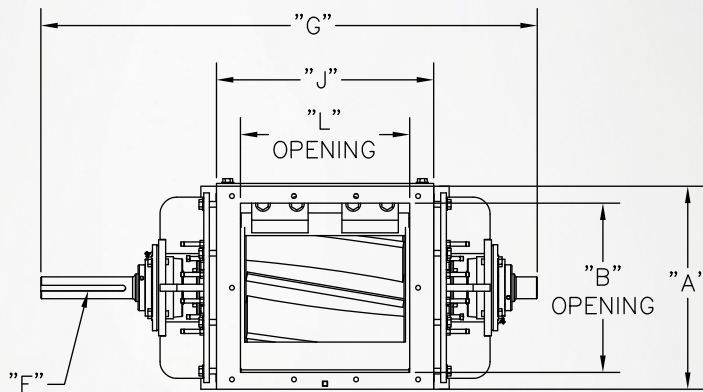
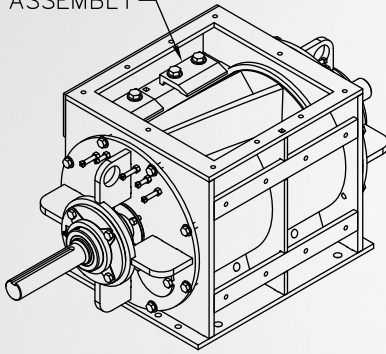
CAPACITY

SIZE	A	B	C	D	E	F	G	H	J	K	L	M	N	Q	CFR	ESTIMATED WEIGHT (LBS.)
14x18	18.00	15.00	18.00	9.00	9.00	½ x ¼ x 7	44.00	15.56	19.25	9.19	15.00	18.00	22.00	1 15/16	.93	500
16x20	20.00	16.00	21.00	10.50	10.00	½ x ¼ x 9	46.00	17.25	21.00	7.75	16.50	20.00	24.00	1 15/16	1.30	800
20x20	25.00	21.00	26.00	13.00	10.00	½ x ¼ x 9	47.00	16.25	21.00	9.25	16.00	20.00	25.00	2 3/16	2.19	1300
20x25	25.00	21.00	26.00	13.00	13.00	½ x ¼ x 9½	51.25	17.00	26.00	8.25	21.00	25.00	30.00	2 7/16	2.93	1450
20x30	25.00	21.00	26.00	13.00	13.00	½ x ¼ x 9½	56.50	17.25	31.00	8.25	26.00	30.00	35.50	2 3/16	3.73	1600
25x30	31.00	27.00	32.00	16.00	15.50	5/8 x 5/16 x 11¾	59.00	20.25	31.00	7.75	27.00	30.00	35.50	2 7/16	6.17	1800
25x35	31.00	27.00	32.00	16.00	15.50	5/8 x 5/16 x 11¾	64.00	20.25	36.00	7.75	31.00	35.00	40.50	2 7/16	7.12	2000
30x30	38.00	34.00	38.00	19.00	20.00	¾ x 3/8 x 11¾	61.00	21.25	31.00	8.75	26.00	30.00	38.00	2 15/16	8.45	2450
30x35	38.00	34.00	38.00	19.00	20.00	¾ x 3/8 x 11¾	66.00	21.25	36.00	8.75	31.00	35.00	43.00	2 15/16	10.12	2700
30x40	38.00	34.00	38.00	19.00	18.00	¾ x 3/8 x 11½	72.50	21.00	41.00	10.50	35.00	40.00	47.00	2 15/16	11.46	2950
30x45	38.00	34.00	38.00	19.00	18.00	7/8 x 7/16 x 11½	77.50	21.00	46.00	10.50	40.00	45.00	52.00	3 7/16	12.98	3200
35x45	44.00	36.00	43.38	22.00	22.75	1 x ½ x 13	85.00	23.50	49.00	12.50	41.75	47.75	55.25	3 15/16	19.68	4600
35x50	44.00	36.00	43.38	22.00	22.75	1 x ½ x 13	95.00	23.50	54.00	12.50	47.00	52.75	60.75	3 15/16	21.82	5200
35x55	44.00	36.00	43.38	22.00	22.75	1 x ½ x 13	95.00	23.50	58.00	12.50	52.00	57.75	65.75	3 15/16	24.08	5800
45x45	56.00	46.00	56.00	28.00	30.00	1¼ x 5/8 x 15½	98.00	28.00	55.00	15.00	42.00	47.00	55.00	4 15/16	30.00	11,500
45x50	56.00	46.00	56.00	28.00	30.00	1¼ x 5/8 x 15½	103.00	28.00	60.00	15.00	47.00	52.00	60.00	4 15/16	34.26	12,200
45x55	56.00	46.00	56.00	28.00	30.00	1¼ x 5/8 x 15½	108.00	28.00	65.00	15.00	52.00	52.00	65.00	4 15/16	37.50	13,000

Wood Chip Feeder Valve

Rotary valve for forestry feeder
and recycling applications

TOP KNIFE
ASSEMBLY



Iris Gravity Valve

Manual control for gravity-flow applications

Control the flow of powders, granules, flakes, crystals and more in production equipment like bulk bag unloaders, hoppers, bins, dryers, blenders and vertical pipe lines.



Closed Position

SECTOR INDUSTRIES:



Plastics



Pet Food



Construction



Food



Chemical

Features

- Available in 8 sizes, from 4" to 18".
- Double-locking diaphragm rotates 180 degrees for added security.
- Fixed bottom flange allows for easy use in down-line equipment.
- Polyurethane-coated nylon diaphragm.

Options

- Available in aluminum alloy and stainless steel.

SPECIFICATIONS:

DIAPHRAGM MATERIAL:

PU-coated Nylon

MATERIAL OF CONSTRUCTION:

Aluminum Alloy, Stainless Steel

SIZE RANGE

8 sizes from 4" to 18"